

TANDY®

Color Computer 3

Cat. No. 26-3159



Slay the beasts
to rescue the Wizard!

castle of tharoggað

TERMS AND CONDITIONS OF SALE AND LICENSE OF TANDY COMPUTER SOFTWARE PURCHASED AND LICENSED FROM RADIO SHACK COMPANY-OWNED COMPUTER CENTERS, RETAIL STORES AND RADIO SHACK FRANCHISEES OR DEALERS AT THEIR AUTHORIZED LOCATIONS

LIMITED WARRANTY

TANDY Software is licensed on an "AS IS" basis, without warranty. The original CUSTOMER'S exclusive remedy, in the event of a Software manufacturing defect, is its repair or replacement within thirty (30) calendar days of the date of the Radio Shack sales document received upon license of the Software. The defective Software shall be returned to a Radio Shack Computer Center, a Radio Shack retail store, a participating Radio Shack franchisee or a participating Radio Shack dealer along with the sales document.

EXCEPT AS PROVIDED HEREIN, RADIO SHACK MAKES NO EXPRESS WARRANTIES, AND ANY IMPLIED WARRANTY OF MERCHANTABILITY OR FITNESS FOR A PARTICULAR PURPOSE IS LIMITED IN ITS DURATION TO THE DURATION OF THE WRITTEN LIMITED WARRANTIES SET FORTH HEREIN.

Some states do not allow limitations on how long an implied warranty lasts, so the above limitation(s) may not apply to CUSTOMER.

RADIO SHACK SHALL HAVE NO LIABILITY OR RESPONSIBILITY TO CUSTOMER OR ANY OTHER PERSON OR ENTITY WITH RESPECT TO ANY LIABILITY, LOSS OR DAMAGE CAUSED OR ALLEGED TO BE CAUSED DIRECTLY OR INDIRECTLY BY "SOFTWARE" LICENSED OR FURNISHED BY RADIO SHACK, INCLUDING BUT NOT LIMITED TO, ANY INTERRUPTION OF SERVICE, LOSS OF BUSINESS OR ANTICIPATORY PROFITS OR INDIRECT, SPECIAL, OR CONSEQUENTIAL DAMAGES.

Some states do not allow the limitation or exclusion of incidental or consequential damages, so the above limitation(s) or exclusion(s) may not apply to CUSTOMER.

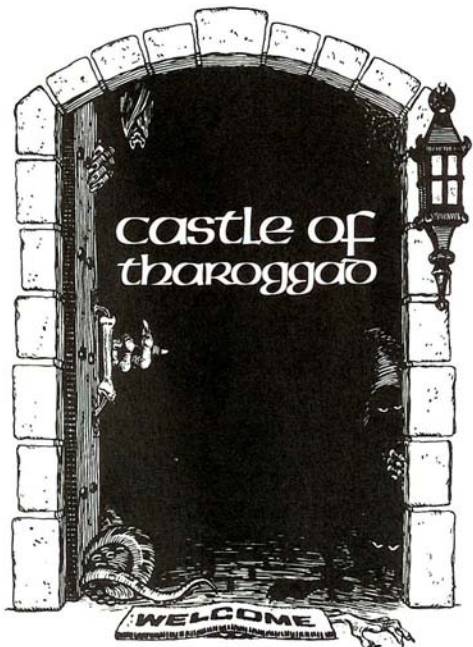
SOFTWARE LICENSE

RADIO SHACK grants to CUSTOMER a non-exclusive, paid-up license to use the Tandy Software on one computer, subject to the following provisions:

- A. Except as otherwise provided in this Software License, applicable copyright laws shall apply to the Software.
- B. Title to the medium on which the Software is recorded is transferred to CUSTOMER, but not title to the Software.
- C. CUSTOMER shall not use, make, manufacture, or reproduce copies of Software except for use on one computer and as is specifically provided in this Software License. Customer is expressly prohibited from disassembling the Software.
- D. CUSTOMER is permitted to make additional copies of the Software **only** for backup or archival purposes or if additional copies are required in the operation of one computer with the Software, but only to the extent the Software allows a backup copy to be made.
- E. All copyright notices shall be retained on all copies of the Software.

The warranties granted herein give the **original** CUSTOMER specific legal rights, and the **original** CUSTOMER may have other rights which vary from state to state.

1/87



Castle of Tharoggad Program
Copyright 1988 by Computerware
Licensed to Tandy Corporation
All rights Reserved

All portions of this software are copyrighted and are the proprietary and trade secret information of Tandy Corporation and/or its licensor. Use, reproduction or publication of any portion of this material without the prior written authorization by Tandy Corporation is strictly prohibited.

Castle of Tharoggad Manual
Copyright 1988 by Computerware
All Rights Reserved

Reproduction or use, without express written permission from Tandy Corporation and/or its licensor, of any portion of this manual is prohibited. While reasonable efforts have been taken in the preparation of this manual to assure its accuracy, Tandy Corporation and/or its licensor assumes no liability resulting from any error or omissions in this manual, or from the use of the information contained herein.

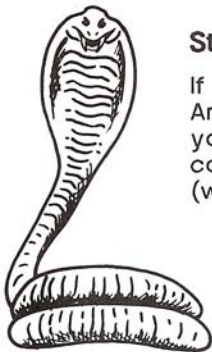
10987654321

Scenario

For years the land of Tharoggad was ruled by a kindly Wizard. One terrible day the Good Wizard was abducted by his jealous evil brother and imprisoned in The Castle of Tharoggad. The Evil Wizard populated the castle with many horrible phantasms which solidify and attempt to kill any trespasser they encounter in the castle. He also set a few dangerous traps for any foolhardy adventurer who attempts to rescue the Good Wizard.



As the bravest and strongest hero in the land, you are selected by the townspeople to enter the Castle of Tharoggad and save the Good Wizard!



Starting Out

If you are using other than an RGB Analog monitor, hold down the F1 key on your keyboard while turning on your computer (with ROM Pack inserted).

Next, you will be asked to enter your name. You may enter from 3 to 8 characters. If you use your initials or an abbreviation, always use the same one every time you play!

The title screen will be displayed, and you will next be asked if you would like to Restore a Game which you previously saved. Press N, unless you have played and saved a game. If you should press Y by accident, just hit ENTER to restart the game. (See "Saving & Loading Passwords.")

Playing the Game

As you enter the Castle, you start out on the ground floor. You have a backpack which contains a fresh torch that you may use to see. There are at least 7 levels of play and on each level you will find a trap door which leads upwards to the next level. You will want to make sure that you have acquired every object on your current level that you think you might need to continue your journey!

The denziens of the Castle will pick up objects as they encounter them and drop objects if you kill them. It may, therefore, be necessary to kill many or all of the creatures on any level to obtain the items you may need later on in the game.





While playing, especially in battle, there will be times when the joystick is not real responsive. Consider this in your strategy . . .

The beating of your heart tells you how healthy you are. The faster it beats, the more tired you are, and the worse your general condition is. Resting will let you regain your strength, if you can avoid monsters long enough. Moving will cause you to get tired, so it is not a good idea to go running all over the Castle and tire yourself out before fighting creatures!

How to use the Icons

The entire game is icon and menu driven. When you start at the first level of play, a little arrow will appear on the lower half of your screen which can be moved by the motion of your joystick. This arrow is your POINTER.



Most of the bottom portion of the screen is composed of cartoon like pictures called ICONS. By moving your pointer on top of these icons and pressing the joystick button, you are SELECTING that icon. The following is a description of what actions you are able to perform by using the POINTER and ICON system:

Grab an Object:

To pick up an object from the floor of the castle, simply select one of the HAND icons and then click on the GRAB icon. If you are already holding an item in the hand you select, you will be told that your request is not possible. You may hold only one item in each hand at any time. If there are several objects on the floor in one spot, the program will pick up the item it first encounters.

Drop an Object:

To drop an object, click on the HAND holding the object you wish to drop then click on the DROP icon.

Inventory your Backpack:

Double-click on the BACKPACK icon to view the items stowed in your backpack. Clicking again anywhere on the screen will remove the inventory menu.

Store an Object:

To stow an object in your backpack, click on the BACKPACK icon, then select the HAND holding the object.

Pull an Object:

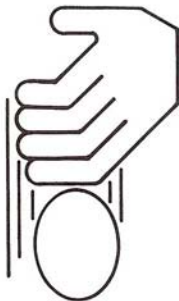
To pull an object from your backpack, click on the BACKPACK icon, then select an empty HAND. A menu of objects will appear. Select one and it will be placed in the hand you choose.

Attack:

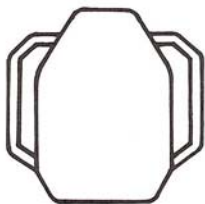
To attack with either hand, double-click on that HAND icon.



grab an object



drop an object



backpack



left hand



right hand

Incant an Object:

To incant an object (such as a torch to light it) pick the HAND icon which holds the object, then click on the INCANT icon.

Movement:

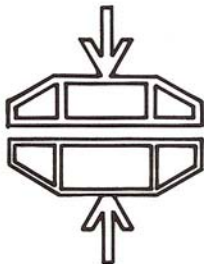
To move forward or backward, click on the F or B characters above and below the COMPASS icon. To turn left or right, click on the L or R characters.

Jump to the Next Level:

Find the trap door in the roof on your current level, and stand directly under it. Click on the JUMP icon to proceed to the next level.

Move Down a Level:

If you want to go back down a level, you must find the hidden trap door in the floor of your current level (where you first stated out on your current level) and select the MOVE DOWN icon. A double beep will inform you if you have found the spot where the trap door in the floor is!



jump to the next level



incant



heart beat



compass



power level

Save the Game:

To save your current status in the game, click on the SAVE icon. You will be presented with four 9 character Passwords which you MUST correctly write down and re-enter to restore the game. This is also a simple way to PAUSE the game if the phone rings.

Passwords

When entering passwords, there is virtually no editing available. Passwords are 9 characters long, and consist of numbers 0-9 and letters A-Z. Four passwords are required to restore a game. If you make an error in entering a password, just hit ESCAPE (or BREAK) and you will have to start back at Password #1 again. If you decide not to enter a password after all, press ENTER and the title screen will be redisplayed.



Saving & Loading

During game play, you may click on the SAVE icon at your convenience. It will not affect game play, and provides a useful pause feature as well! Four 9 character passwords will be presented. Pressing any key continues to the next password.

Saving a game has its' advantages and disadvantages! When you use the passwords to restore a game, your saved level, position, inventory, item status, strength, items in hands, direction facing, and more will be restored to their condition at the point you saved.

If you were fighting a creature, however, you will find that any damage you may have done to him will be healed! Only creatures that you have killed will stay dead; any injured creatures will regain full strength upon restoring a game. To make up for this, restoring also causes all creatures to appear randomly, so that a save while fighting a creature may not necessarily cause him to appear near you on restoring the game.



Castle of Tharoggad

Storm the treacherous castle to rescue the good wizard. Slay the scary beasts that lurk in the mazes, break through sinister traps set by his evil captor, and overcome the weariness that threatens your survival.

What you will need:

- Tandy Color Computer 3
- Television or monitor
- Joystick or mouse