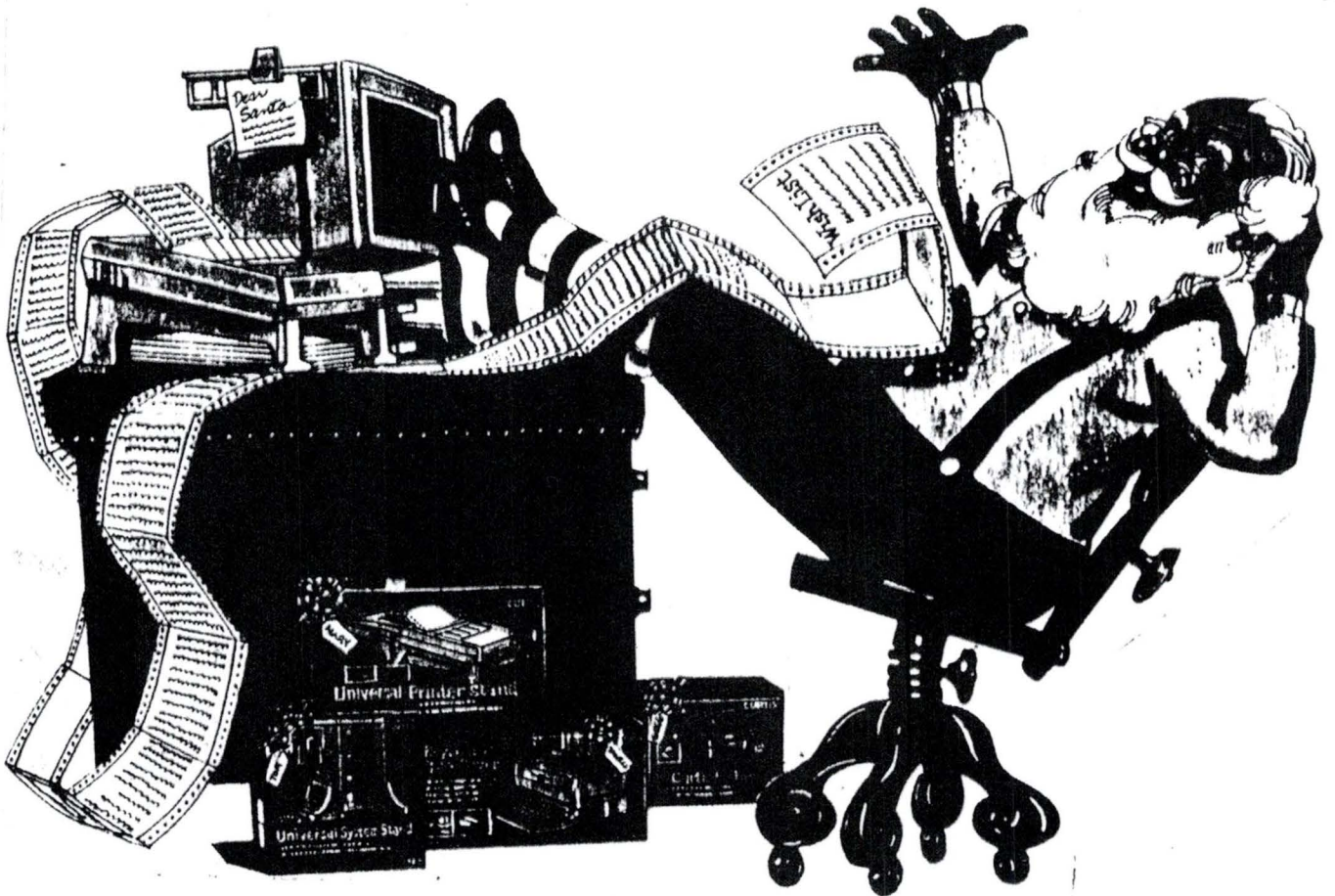


Brought to you

By

Cyborg

Copy-unright© 1989
No Rights Reserved



The Pirates Den

Volume 1 Issue 2

December 1983

Table of Contents

Editors Note.....) 1	
HINT.....) 1	
(Hints about the use of waste paper)		
TRS-80 Magazine.....) 1a	Editor and Publisher:
		Cyborg
Stocks.....) 2	
(Stock market simulation game)		
Dir.....) 5	Program Manager:
(A short util. to make directory listings easier)		Cyborg
6ms?.....) 5	Contributors:
(Set your drives step rate to 6ms)		You! The CoCo Community
Nine Times.....) 5a	
(Advertisement)		
OPCODES.....) 8	The Pirates Den DOES NOT condone or approve of
(Very Strange!)		Software Piracy of any type.
Sundog Systems.....) 8	The Pirates Den is just a "Title and does not mean
Freeway.....) 9	that we will have anything to do with <u>anything</u> tha
(Can you drive well enough to avoid a crash?)		is Pirated!
Moon Base Fallout.....) 10	We are here to try and help you get more enjoymen
(Destroy the Ruskies before they get you)		from your CoCo.
JR & JR Softstuff.....) 11	
TRS-80 Magazine.....) 11a	
Super Menu.....) 12	
(A disk menu system with an extra kick)		
Submission Sheet.....) 17a	
Order Form.....) 18	

Well December is finally here!

The time for giving and spending time with loved ones. We here at The Pirates Den hope you have a happy healthy holiday season!

This month you'll find a wealth of programs, utilities, tips, and information for your TRS-80 CoCo.

You will find that there aren't any Christmas programs, that is unless we receive some before this goes to press! We just started last month, as you know, and haven't received any holiday specific programs. Hopefully that will change.

This month we're starting to print the listings in a 32 character broken line format, the same way our beloved CoCo's break words on the screen. This should aid in typing the programs in and de-bugging!

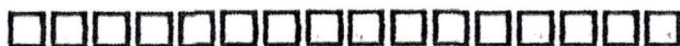
We're still looking for volunteers to send the following:

- PROGRAMS! of any kind.
- Product reviews
- Software reviews
- Articles
- Reader's letters
- Hints-N-Tips
- Shorties - Programs 1

to 10 lines long.
And Much more!

Next month we'll feature a software/hardware project that will allow you to communicate over the phone lines between two CoCo's WITHOUT using a modem!

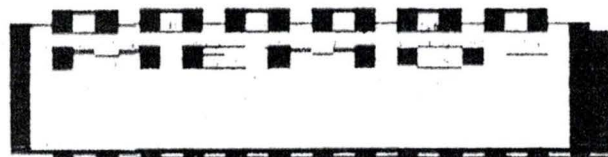
Till next month have a MERRY CHRISTMAS, a HAPPY NEW YEAR, and keep on hacking!



Hint

We all have a lot of waste paper when using our printers. How about putting it to use instead of throwing it all away?

Whenever you have a piece of waste paper, put it on the side in a file folder. When you have collected a good amount, use a cheap Paper Cutter to cut it into usable size scratch paper - 3"X5", 4"X4", etc. It is surprising how much nice scratch paper you can make out of your old, previously wasted, computer paper. N.G.T.



TRS-80 COMPUTING

*The bi-monthly magazine
for Coco users*

TRS-80 Computing brings
you 20-30 pages of great
value to your Tandy
Color Computer!

Each issue contains:

- * At least three exciting
BASIC programs
- * handy articles, reviews,
sales, advertisements,
and much, much more!

FOR A TRIAL ISSUE OF TRS-80 COMPUTING
SEND YOUR NAME, FULL ADDRESS, AND A
\$2.25 TO:

TRS-80 COMPUTING
65 OAK ROAD
CANTON, MA. 02021

WE
SELL
SOFTWARE

TRS-80
COMPUTING
65 OAK ROAD
CANTON, MA. 02021
828-7749

AUGUST 1989

\$11.25
CANADIAN \$11.25

VOLUME 3
NUMBER 1

TRS-80 COMPUTING

THE BI-MONTHLY MAGAZINE FOR COLOR COMPUTER USERS

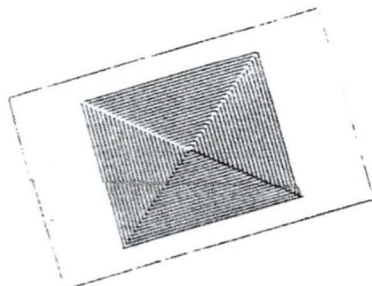
"ANYTHING ISSUE"

GRAPHICS ISSUE

GRAPHICS EXTRAVAGANZA

FEATURES:

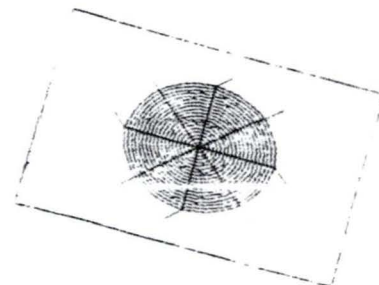
- * SEVERAL GRAPHICS/ANIMATION
PROGRAMS FOR THE COCO
 - * A GREAT TUTORIAL ON PROGRAMMING HIGH-RES
GRAPHICS ON YOUR COCO
 - * A COCO GRAPHICS ART GALLERY
 - * A FUN GOLF GAME FOR THE COCO 3
- AND PLENTY MORE!



ALSO:

THE WINNER OF THIS
MONTH'S GRAPHICS CONTEST

A BRAND NEW SPECIALS
SECTION



Stocks is a 2 to 10 player stock market simulation. Buy Gold, Silver, etc. and hope the bottom doesn't fall out of the market.

Be the first to reach the set amount to win. Enjoy.

```

10 QZ=RND(-TIMER)
20 CLS:PRINT"STOCK REPORT GAME":
PRINT"-----":PRINT
30 PRINT:PRINT:PRINT:PRINT"DO YO
U WANT INSTRUCTIONS (Y/N)":
40 W$=INKEY$:IF W$="" THEN 40
50 IF W$="Y" THEN 60 ELSE 120
60 CLS:PRINT"OBJECT OF THE GAME
IS TO"
70 PRINT"BUY & SELL STOCK AND MA
KE"
80 PRINT"THE MOST MONEY":PRINT"R
ULES ARE AS FOLLOWS:"
90 PRINT:PRINT"ALL STOCKS START
AT A VALUE OF $1.00":PRINT"ALL
STOCKS PAY DIVIDENDS ON STO
CKS VALUED AT $1.00 & UP":PRINT"
ALL STOCKS SPLIT AT $2.00 & OFF
THE BOARD AT 0, BOTH GO BACK TO
$1.00 AND START OVER":PRINT"GOOD
LUCK!!"
100 PRINT:PRINT"PRESS ANY KEY TO
CONTINUE"
110 A$=INKEY$:IF A$="" THEN 110
120 CLEAR 1000:DIM NA$(10),ST(10
,6),CA(10),U(10)
130 CLS
140 Q$=" #.##":QQ$="###.##.##":
J$="###.###"
150 PRINT" (1) (2) (3) (4)
(5) (6)"
160 PRINT"grain gold silver oil

```

```

bonds ind."
170 X=0:FOR Y = 1 TO 6:S(Y)=1:NE
XT:K=0
180 GOSUB 380
190 PRINT @ 128,"DECLARE A WINNE
R AT 100,000?"
200 PRINT"<Y OR N>":
210 W$=INKEY$:IF W$="" THEN 210
220 IF W$="Y" THEN WI = 100000:
GOTO 240
230 PRINT:INPUT"WHAT AMOUNT (MAX
.900000)":WI
240 GOSUB 1140:X=X+1:K=K+1
250 PRINT @ 96,"":PRINT"(10 PEOP
LE MAX. 8 LETTERS ONLY, PRESS <
ENTER> TO STOP)"
260 PRINT:INPUT "WHO'S PLAYING":
NA$(X)
270 IF NA$(X)="" THEN K=K-1:GOT
O1260
280 CA(X)=5000
290 GOSUB 470
300 PRINT @ 416,"BUY, SELL OR NO
THING":
310 RR$=INKEY$:IF RR$="" THEN 31
0
320 IF RR$="B" THEN GOSUB 840:G
OTO 290
330 IF RR$="S" THEN GOSUB 1000
:GOTO 290
340 IF RR$="N" THEN GOTO 240
350 GOTO 300
360 '
370 '
380 PRINT @ 64,USING Q$:S(1)
390 PRINT @ 69,USING Q$:S(2)
400 PRINT @ 75,USING Q$:S(3)
410 PRINT @ 80,USING Q$:S(4)
420 PRINT @ 86,USING Q$:S(5)
430 PRINT @ 91,USING Q$:S(6)
440 RETURN

```

```

450 '
460 '
470 PRINT @ 96,NA$(X)
480 PRINT @ 110,"SHARES"
490 PRINT @ 120,"VALUE"
500 PRINT
510 PRINT "GRAIN"
520 PRINT @ 171,USING J$:ST(X,1)
530 VA=ST(X,1)*S(1)
540 PRINT @ 182,USINGQQ$:VA:T=VA
550 PRINT@192,"GOLD"
560 PRINT @ 203,USINGJ$:ST(X,2)
570 VA = ST(X,2)*S(2)
580 PRINT @ 214,USING QQ$:VA:T=T
+VA
590 PRINT@224,"SILVER"
600 PRINT @ 235,USINGJ$:ST(X,3)
610 VA= ST(X,3)*S(3)
620 PRINT @ 246,USING QQ$:VA:T=T
+VA
630 PRINT@256,"OIL"
640 PRINT @ 267,USING J$:ST(X,4)
650 VA=ST(X,4)*S(4)
660 PRINT @ 278,USING QQ$:VA:T=T
+VA
670 PRINT @ 288,"BONDS"
680 PRINT @ 299,USINGJ$:ST(X,5)
690 VA=ST(X,5)*S(5)
700 PRINT @ 310,USING QQ$:VA:T=T
+VA
710 PRINT @ 320,"IND."
720 PRINT @ 331,USINGJ$:ST(X,6)
730 VA=ST(X,6)*S(6)
740 PRINT @ 342,USING QQ$:VA:T=T
+VA
750 PRINT @ 352,"CASH ON HAND"
760 PRINT @ 374,USING QQ$:CA(X):
T=T+CA(X)
770 PRINT @384,"TOTAL"
780 PRINT @ 406,USINGQQ$:T
790 IF T=0 THEN RETURN
800 IF T= WI OR T > WI THEN 1790
810 RETURN
820 '
830 '
840 GOSUB 1110
850 PRINT @ 416,"BUY WHAT?";
860 A$=INKEY$:IF A$="" THEN 860
870 GOSUB 1170
880 IF P=1 THEN 840
890 PRINT @ 434,"AMOUNT";
900 INPUT B
910 CA(X) = INT(CA(X)*100+.05)/1
00
920 D=CA(X):D=D-(B*S(C))
930 IF D=0 THEN 950
940 IF D<0 THEN PRINT @416,"NOT
ENOUGH CASH TO BUY":FOR LL=1TO5
00:NEXT:RETURN
950 ST(X,C)=ST(X,C)+B
960 CA(X)=CA(X)-(B*S(C))
970 GOSUB 1140:RETURN
980 '
990 '
1000 GOSUB 1110
1010 PRINT @ 416,"SELL WHAT?";
1020 A$=INKEY$:IF A$="" THEN 102
0
1030 GOSUB 1170
1040 IF P = 1 THEN 1000
1050 PRINT@ 434,"AMOUNT";:INPUT
B
1060 D= ST(X,C):D=D-B:IF D<0 THE
N PRINT @ 416,"NOT ENOUGH TO SEL
L":FORLL=1TO500:NEXT:RETURN
1070 ST(X,C)=ST(X,C)-B:CA(X)=CA(
X)+(B*S(C)):CA(X)=INT(CA(X)*100+
(.05)/100
1080 GOSUB 1140:RETURN
1090 '
1100 '
1110 PRINT @ 416,"":PRINT:RETURN

```



```

1120 '
1130 '
1140 FOR Z = 96 TO 448 STEP 32:P
PRINT @ Z, "":NEXT:RETURN
1150 '
1160 '
1170 P=0:IF A$="1" THEN PRINT@42
6,"grain":C=1:RETURN
1180 IF A$="2" THEN PRINT@426,"g
old":C=2:RETURN
1190 IF A$="3" THEN PRINT@426,"s
ilver":C=3:RETURN
1200 IF A$="4" THEN PRINT@426,"o
il":C=4:RETURN
1210 IF A$="5" THEN PRINT@426,"b
onds":C=5:RETURN
1220 IF A$="6" THEN PRINT@426,"i
nd.":C=6:RETURN
1230 P=1:RETURN
1240 '
1250 '
1260 GOSUB 1140
1270 GOSUB 1400
1280 FOR X=1 TO K
1290 GOSUB 470
1300 PRINT @ 416,"BUY, SELL OR n
OTHING":
1310 RR$=INKEY$:IF RR$="" THEN 1
310
1320 IF RR$="B" THEN GOSUB 840:G
OTO 1290
1330 IF RR$="S" THEN GOSUB 1000:
GOTO 1290
1340 IF RR$="N"THEN GOTO 1360
1350 GOTO1300
1360 NEXT X
1370 GOTO 1260
1380 '
1390 '
1400 FOR L = 1 TO 20
1410 C=RND(6)
1420 IF C= 0 THEN 1410
1430 E=RND(3)
1440 IF E=0 THEN 1430
1450 F=RND(3)
1460 IF F=0 THEN 1450
1470 IF F=1 THEN F=.05
1480 IF F=2 THEN F=.10
1490 IF F=3 THEN F=.20
1500 IF E = 1 THEN S(C) =S(C)+F:
IF S(C)=>2 THEN GOSUB 1580
1510 IF E=2 THEN S(C)=S(C)-F:IF
S(C)< .05 THEN GOSUB 1650
1520 IF E=3 THEN GOSUB 1720
1530 GOSUB 380
1540 NEXT L
1550 RETURN
1560 '
1570 '
1580 S(C) =1
1590 FOR X=1 TO K
1600 ST(X,C)=ST(X,C)*2
1610 NEXT X
1620 RETURN
1630 '
1640 '
1650 S(C)=1
1660 FOR X=1 TO K
1670 ST(X,C) = 0
1680 NEXT X
1690 RETURN
1700 '
1710 '
1720 IF S(C)<1 THEN RETURN
1730 FOR X=1 TO K
1740 CA(X)=CA(X)+(ST(X,C)*F)
1750 NEXT X
1760 RETURN
1770 '
1780 '
1790 CLS:PRINT"WE HAVE A WINNER"
:PRINT

```

```

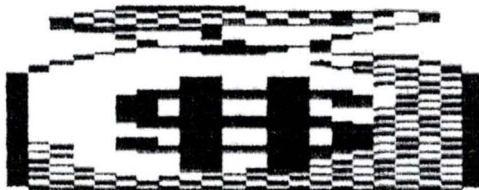
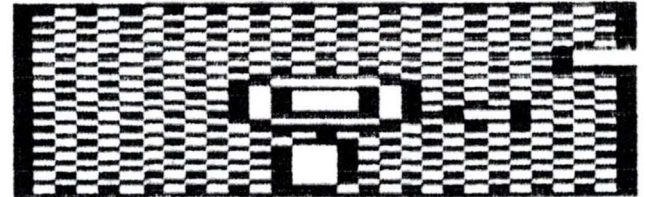
1800 FOR X= 1 TO K
1810 U(X)=(ST(X,1)*S(1))+(ST(X,2
)*S(2))+(ST(X,3)*S(3))+(ST(X,4)*
S(4))+(ST(X,5)*S(5))+(ST(X,6)*S(
6))+CA(X)
1820 PRINT NA$(X)
1830 PRINT USING QQ$;U(X)
1840 NEXT X
1850 FOR X = 1 TO K
1860 IF U(X) >L THEN L=U(X)
1870 NEXT X
1880 FOR X = 1 TO K
1890 IF U(X) = L THEN 1910
1900 NEXT X
1910 PRINT:PRINT"CONGRATULATIONS
";NA$(X)
1920 PRINT "YOU ARE THE WINNER"

```

```

80 PRINT@A+B*4,"D S (5)"
90 PRINT@A+B*5," O (7)"
95 PRINT@A+B*6," N "
100 FOR C=0TO31
110 SET (29,C,0)
120 NEXT C
130 EXEC Z
140 END

```



~~~~~  
Here is a couple of pokes to set your disk drive at a lightning fast 6 milliseconds instead of the normal (Snail's pace) 30 milliseconds.

**POKE 55232,0:POKE 55318,20**

Thanks go to Ed Robinson!!!

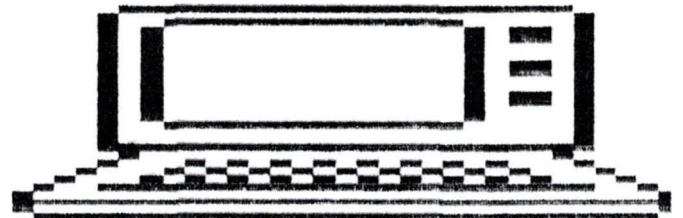
oooooooooooooooooooooooooooooooooooooooooooooooooooooooooooo

~~~~~  
This 'short' utility will display your directory on the screen and allow you to LOAD and RUN or LOADDIR and EXEC a program on a disk. Simply use the arrow keys to highlight a filename and hit ENTER.

```

10 CLS
20 Z=PEEK(&H1B)*256+PEEK(&H1C)-6
30 B=32:A=166
40 PRINT@A,"D O.(3)"
41 PRINT@A-B,"E R (4)"
50 PRINT@A+B,"W B (1)"
60 PRINT@A+B*2,"A I (2)"
70 PRINT@A+B*3,"R N (5)"

```



Nine-Times

The first magazine devoted exclusively to OS-9!

Every other month you will receive a disk *jam-packed* with programs and articles *all* for **OS-9**.

Each issue contains: 10 helpful and useful programs to help build your OS-9 library * Instructions, examples, and samples of Basic09 procedures and subroutines to help with your own programs and your understanding of Basic09 * C programs and programming examples * Program reviews, Hints, Help columns, and informative articles to advance your knowledge of OS-9 * Supplied totally of 5.25" disk * Bound manual sent to each new subscriber for help in getting *Nine-Times* up and running, as well as tips on using it with a ram disk or hard disk * All graphic/joystick interface for ease of use.

1-Year Subs, \$34.95 Canadian postage, add \$1.00
Foreign postage, add \$7.00

Back Issues: Back issues are available for the May 1989 and July 1989 issues. Please write for information on Back Issue contents.

Back Issue, ea. \$7.00 Foreign postage, add \$1.50 ea.

Magazine Source: Due to many inquiries, the source code for the magazine graphic shell is being provided as an informational tool. Included is the actual Basic09 source code and compiled modules on disk, as well as documentation and a printed copy of the source code.

Source, \$24.95 Foreign postage, add \$1.50

To order, please send U.S.
check or money order to:

JWT Enterprises
5755 Lockwood Blvd.
Youngstown, OH 44512

Technical Assistance:
(216)-758-7694

Sorry, no C.O.D.'s; foreign orders, *please use U.S. money orders.*
Checks, allow 3 weeks for receipt of first issue/back issue.

Copyright (C) 1989

OS-9 is a trademark of Microware Systems Corp. and Motorola, Inc.

OPCODES

[FORT WORTH, TX] --

Inside sources at Fort Worth Industrial Spies Inc., have released previously unknown information about the new computer said to be in the works at the Tandy Corporation, another Fort Worth company.

The spy's report concludes that the basis of the new machine will be a previously unheard of MC68813 microprocessor, a chip so powerful that it is said to use a 220V power bus, and will come complete with a low-yield nuclear power plant for portable operation.

In addition to the above features of the 68813, research analysts say that the new microprocessor will include the ultimate in addressing architecture, with 161 easy to remember addressing modes.

Some of the new opcodes for the 68813 are:

AAC Alter All Commands
AAR Alter At Random

AB Add Backwards
ABBA Plag Swedish Rock
ADGB Add Garbage
AFUC Add Finagle's Variable Constant
AIB Attack Innocent Bystander
ALWT Assemble with Tinker Toys
BAC Branch to Alpha Centauri
BAD Bark At Dog
BAF Blow All Fuses
BAH Branch and Hang
BCIL Branch Creating Infinite Loop
BBL Branch and Blow Lightbulb
BDC Break Down and Cry
BDT Burn Down Tree
BF Belch Five
BFEI Beg For Expansion Interface
BLI Branch and Loop Infinite - requires 5 less machine cycles than BCIL
BMUS Beam Me Up, Scotty
BPP Branch on Program Bug
BPO Branch if Power Off
BPM Begin Pirate Mode
BRN Burn SAM chip
BSU Branch on Slightest Whim
BW Branch on Whim
CBNC Close, But No Cigar
CH Create Hovac
CFP Call For Programmer
CFPG Call For Programmer, Collect
CLD Try to Cool Down SAM chip
CMD Create Meaningless Data
CML Compute Meaning of Life
CMS Catch Mouse
CNB Cause Nervous Breakdown
CNP Call National Parts
COLB Crash on Operator's Lunch Break
CPB Create Program Bug
CPM Create Program Manual
CRASH Continue Running After Stop or Halt
CRN Convert to Roman Numerals
CS Crash System
CSD Create Static Discharge
CSI Curse and Sweat Loudly
DAO Divide and Overflow
DBZ Divide by Zero
DDC Dally During Calculations
DEVO Start New Wave [Sine]

DMPE Decide to Major in Phys. Ed.	IOR Illogical Or	RBT Read and Break Tape
DOC Drive Operator Crazy	ISC Insert Sarcastic Comments	RCB Read Commands Backwards
DLN Don't Look Now	JOF Jump on Floor	RDA Refuse to Disclose Answer
DPMH Declare Programmer Mentally Incompetent	JOM Jump on Motorola	REST Relax for 25 Cycles
DPR Destroy Program	JOT Jump on Table	RLI Rotate Left Indefinitely
DTC Destroy This Command	ITZ Jump to Twilight Zone	RPM Read Programmer's Mind
DTUFL Destroy Third Variable From Left	LAP Laugh at Programmer	RRSGWSSNK Round and Round She Goes... Where She Stops, No One Knows
DW Destroy World	LPA Lead Programmer Astray	RTR Refuse to Run
ECO Electrocute Computer Operator	MAZ Multiply Answer by Zero	RTM Return to Motorola
EIAO Execute in Any Order	MDB Multiply and Drop Bits	RTT Return to Tandy
EIP Erase if Pirated	MW Malfunction Whenever	RSD Read and Scramble Data
ENF Emit Noxious Fumes	MWK Multiply Work Without Telling	RWD Read and rewind Disk
EP Execute Programmer	MWT Malfunction Without Telling	SAI Skip All Instructions
ERS Erase Read Only Storage	NOPE Refuse to Do Anything	SCCA Set to Short Circuit on Correct Answer
ETOY Emulate ZX-81	OCD Open Commodore-Dor Law	SFH Set Flags to Half Mast
FLI Flash Lights Impressively	OML Obey Murphy's Law	SFT Stall for Time
FSM Fold, Spindle and Multilate	PAS Print and Smear PEHC Punch Extra Holes in Card	SOS Sign Off, Stupid
GCAR Get Correct Answer, Regardless	PIP Pulverize Peripheral Interface	SRDR Shift Right, Double Ridiculous
GDP Grin Defiantly At Programmer	PNRP Print Nasty Replies to Programmer	SRZ Subtract and Reset to Zero
HFA Hire From Atari	PSD Perform Safety Dance	STD Stop Turning Disk
HCF Halt and Catch Fire	RA Randomize Answer	TALK Turn on Speech Synthesis
HFC Hide From Children	RBD Read and Break Disk	
HIC Help Intel Chip		
IAD Illogical Add		
IBM Interrupt Bad Mnemonics		

- TARC Take Arithmetic Review Course
- TLO Turn Off Indicator Lights
- TH Take Nap
- TPH Tell Programmer to Do It Him/Her Self
- TPR Tear Paper
- TTA Try Try Again
- UP Understand Program
- WED Write and Erase Data
- WOJ Wear Out Joystick
- WSWW Work in Strange and Wondrous Ways
- XBRA Call Dolly Parton
- XIO Execute Invalid OpCode

DRAGONBLADE

Another great 84K animated adventure! Can you obtain the enchanted sword to slay the evil dragon? See 11/88 Rainbow review. Disk \$19.95.



WHITE FIRE OF ETERNITY



Enter the era of monsters and magic in this splendid 84K animated adventure! See 12/88 Rainbow review. Disk \$19.95.

Personal checks, money orders, and American C.O.D. orders accepted. Include \$2.50 for S/H. \$3.00 extra for C.O.D. orders. PA residents add 6% sales tax. Authorship and dealer inquires welcome.

SUNDOG SYSTEMS



Become RASTANN, Warrior King, on the quest to regain his rightful crown, hidden deep within a sinister land. Battle monsters, gain magic and weapons, and travel through harsh wilderness and dark castle dungeons in this medieval realm. From the creator of *Kung-Fu Dude* comes this awesome arcade game for the CoCo III! *Warrior King* uses the most detailed 320x200 16 color graphics and high speed machine code to vault you into a world of fantasy. Dare ye challenge the many perils ahead in order to become WARRIOR KING? Req. 128K CoCo III, disk drive, and joystick. Only \$29.95.

In Quest of the Star★Lord



This is THE graphic adventure for the CoCo III! Unparalleled 320x200 animated graphics will leave you gasping for more! You quest for the Phoenix Crossbow in this post holocaust world of science and fantasy. *In Quest of the Star Lord* is a full 4 disk sides of mind-numbing adventure! Req. 128K CoCo III and disk drive. Only \$34.95. Hint Sheet: \$3.95.

"A dynamite program! The best graphics I've seen to date on the CoCo III. You have to see it to believe it."

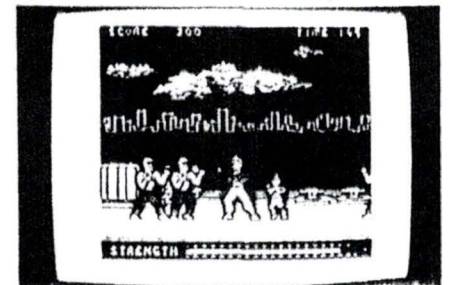
— 8/88 Rainbow review

Kung-Fu Dude

An exciting arcade game. The BEST karate game ever created for the CoCo! Destroy opponents and evade obstacles as you grow ever closer to your ultimate objective. Spectacular graphics, sound effects, and animation! Req. 64K CoCo, disk drive, and joystick. Only \$24.95.

"The CoCo karate gap has been filled and *Kung-Fu Dude* does it excellently. I highly recommend it!"

— 2/88 Rainbow review



All programs CoCo 1, 2, 3 compatible, unless otherwise stated

Sundog Systems
21 Edinburg Drive
Pittsburgh, PA 15235
(412) 372-5674

FREEWAY!

Grab your right joystick and prepare to drive for your life! Can you make it to the finish without getting hit? If so, you will be well rewarded.

```

10 ST=0:CLS:INPUT "YOUR FIRST NAME ";N$
20 X=15:T=0:TIMER=0
30 A=INT(JOYSTK(0)/22)-1
40 PRINT@160+X,CHR$(143)
50 X=X+A:Y=POINT(X*2,13)
60 IF Y>0 THEN X=X-A:T=T+1:SOUND 150,1
70 PRINT @192+X,CHR$(128);
80 PRINT @480,T:TAB(4)CHR$(207);
90 PRINT TAB(RND(26)+3) CHR$(143)+(END(7)*16));
100 PRINT TAB(30) CHR$(207)
110 IF TIMER>3000 THEN GOTO 130
120 GOTO 30
130 CLS:PRINT "YOUR SCORE IS":T
140 IF T=0 THEN GOTO 290
150 PRINT N$;" YOU HAD A WRECK EVERY ";INT(50/T);" SECONDS
160 IF T>6 THEN PRINT "WHEN ARE YOU GOING TO LEARN HOW TO DRIVE?"
170 IF T>=4 AND T<6 THEN PRINT N$;" YOUR A FAIR DRIVER"
180 IF T<4 THEN PRINT N$;" I'LL LET YOU DRIVE ME ANYTIME"
190 IF T<2 THEN PRINT N$;" YOU SHOULD BE A PRO."
200 IF T>10 THEN PRINT N$;" THEY SHOULDN'T LET PEOPLE LIKE YOU ON THE ROAD"
210 IF T>15 THEN PRINT "LICENSE

```

```

REVOLVED!!!":END
220 IF ST=0 THEN 260
230 IF T+1<ST THEN PRINT "YOUR IMPROVING"
240 IF ST+1<T THEN PRINT "YOUR DRIVING IS GETTING WORSE"
250 IF ST+3<T THEN PRINT "BE CAREFUL **** YOU'LL LOOSE YOUR **LICENSE****"
260 ST=T
270 INPUT "ANOTHER GAME (Y) OR (N) ";Z$
280 IF LEFT$(Z$,1)="Y" THEN T=0:GOTO 20 ELSE END
290 PMODE 4,1:SCREEN1,1:PCLS0
300 PMODE3,1:COLOR 2,2:FOR X=1 TO 5
310 P=RND(255):Q=RND(191)
320 FOR CN=191 TO Q STEP -2
330 PSET(P,CN,3):PLAY"T255:L255:05BB
340 PRESET(P,CN+2):NEXT CN
350 FOR CI=0 TO RND(30)
360 CIRCLE(P,Q),CI
370 PLAY"V30;01CCCV25":NEXT CI:NEXTX
380 FOR SO=1 TO 255 STEP 3
390 PLAY"T255:L255:05BAGFEDCO4BAGFEDCO3BAGFEDCO2BAGFEDCO1BAGFEDCO
400 FOR SO=255 TO 1 STEP -3
410 PLAY"05BAGBAGBAGBAGFEDCO4BAGFEDCO4BAGFEDCO3BAGFEDCO2BAGFEDCO1BAGFEDCCDEFGAB02CDEFGAB03CDEFGAB04CDEFGAB05CDEFGAB"
420 CLS:PRINT @ 225," PARDON US FOR THE FIREWORKS BUT DRIVING LIKE THAT DESERVES TRIBUTATION."
430 FOR X=0 TO 1000:NEXT:GOTO270

```

(END OF LISTING)

Moon Base Fallout

It's us against them. Who are "Them" you may be asking. "Them" are the Russians, the all around bad guys from the U.S.S.R.!

Don't worry, the earth isn't in danger of being nuked. The moon? Well that's up to you. Take charge and prepare to nuke some Russkie butt!

```

100 CLS:PRINT:PRINT:PRINT"
  MOON BASE FALLOUT":PRINT
110 A=10000:B=10000:C=20:D=10:E=
  20:F=10
120 PRINT"A NUCLEAR WAR HAS BROK
  EN OUT ON THE SURFACE OF THE MOO
  N BETWEEN MILITARY EXPERIMENT ST
  ATIONS OWNED BY THE USA AND USSR
  ."
130 PRINT"EACH IS EQUALLY ARMED
  WITH 10 ANTI-MISSILES. AND A ST
  OCK OF 20 NUCLEAR WARHEADS, WHIC
  H MAY BE RENEWED. "
140 PRINT"DEATH TOLL IS CALCULAT
  ED BY PROXIMITY OF IMPACT. ITS A
  FIGHT TO THE FINISH! EACH TURN
  YOU MAY EITHER LAUNCH A MISSI
  LE OR PRODUCE 3. "
150 INPUT A$
160 A$=INKEY$
170 CLS
180 PRINT"YOU ARE THE COMMANDER
  OF THE USA BASE. "
190 INPUT"PRESS ENTER TO START G
  AME":A$:CLS
200 GOTO 220
210 INPUT"PRESS ENTER TO CONTINU
  E":A$:CLS
220 PRINT"*****STATUS REPOR

```

```

T*****"
230 PRINT"-----
-----"
240 PRINT"USA--":A:"PEOPLE,"C:"M
  ISSILES"
250 PRINT"USSR-":B:"PEOPLE,"E:"M
  ISSILES"
260 PRINT
270 PRINT"USA--":D:"ANTI-MISSILE
  S(UNRENEW)"
280 PRINT"USSR-":F:"ANTI-MISSILE
  S(UNRENEW)"
290 PRINT"-----
-----"
300 PRINT
310 PRINT"WHAT ARE YOUR ORDERS?
  ENTER 1"
320 PRINT" FOR LAUNCH OR 2 FOR P
  RODUCE"
330 INPUT V
340 IF (V=1)*(C>0) GOTO 360
350 C=C+3:PRINT"THREE MISSILES P
  RODUCED":GOTO 470
360 T=RND(100):X=RND(50):IF X=35
  GOTO 820
370 C=C-1
380 PRINT"MISSILE LAUNCHED...":F
  OR Z=1 TO 500:NEXT Z:GOTO 700
390 PRINT
400 PRINT"MISSILE EXPLODES":T:"M
  ILES FROM"
410 PRINT"USSR MOONBASE."
420 P=(100-T)*10:IF P>B THEN P=B
430 PRINTP:"RUSSIANS DIE FROM TH
  E BLAST"
440 PRINT"AND FROM RADIOACTIVE F
  ALLOUT"
450 B=B-P
460 IF B<=0 GOTO 780
470 IF E<>1 GOTO 510
480 PRINT"USSR BASE GOES INTO MI

```



```

SSILE PRO"
490 PRINT"DUCTION AT THIS TIME"
500 E=E+3:GOTO 210
510 PRINT"USSR LAUNCHES MISSILE"
:IF D=0 GOTO 620
520 E=E-1
530 PRINT"DO YOU WANT TO LAUNCH
AN"
540 PRINT"ANTI-MISSILE NOW? (1=Y
ES AND"
550 PRINT"2 =NO)":INPUT U
560 IF U<>1 GOTO 620
570 Z=RND(2):IF Z=2 GOTO 600
580 PRINT"ANTI-MISSILE DESTROYS
USSR"
590 PRINT"MISSILE":D=D-1:GOTO 21
0
600 PRINT"ANTI-MISSILE MALFUNCTI
ON, USSR"
610 PRINT"MISSILE INTACT":D=D-1
620 L=RND(50):IF G=35 GOTO 840
630 PRINT"MISSILE LAND":L:"MILES
FROM USA MOON-"
640 PRINT"BASE"
650 N=((100)-L)*10:IF N>A THEN N
=A
660 PRINTN:"AMERICANS DIE FROM T
HE BLAST AND"
670 PRINT"FROM THE FALLOUT."
680 A=A-N:IF A<=0 GOTO 800
690 GOTO 210
700 IF F=0 GOTO 720
710 M=RND(2):IF M=1 GOTO 740
720 PRINT"USSR DOES NOT LAUNCH A
NTI-MISSILE"
730 GOTO 390
740 I=RND(2):PRINT"USSR LAUNCHES
ANT-MISSILE":IF I=2 GOTO 770
750 PRINT"ANTI-MISSILE DOES NOT
DESTROY USA"
760 PRINT"MISSILE":F=F-1:GOTO 39

```

```

0
770 PRINT"DIRECT HIT ON USA MISS
ILE":F=F-1:GOTO 470
780 PRINT"USSR MOONBASE IS DEAD!
USA WINS!!"
790 END
800 PRINT"USA MOONBASE IS DEAD!
USSR WINS!"
810 END
820 PRINT"DIRECT HIT! USSR MOON
BASE IS
830 PRINT"WIPED OUT":PRINT:GOTO
780
840 PRINT"DIRECT HIT! USA MOONB
ASE IS BLOWN"
850 PRINT"TO PIECES!":GOTO 800

```

~~~~~ Buried Buxx

Fly your Helicopter into enemy territory, dig up the loot and return to base.

Watch out for the ever-present patrol aircraft and ground base missiles.

100% ML (CoCo 1, 2, or 3 and Joystick) \$19.95

JR & JR SOFTSTUFF

P.O. Box 118
Lompac, CA 93438
(805) 735-3889

All programs on diskette only. All orders add \$3.00 Shipping. C.O.D. orders \$4.00 additional.

Many more programs available including: Milestones, Fontgen, Diskease, Picture Puzzles, Quantum Leap and more. Call or write for a complete list of available programs
~~~~~

**TRS-80 Computing**®, a bi-monthly magazine for Color Computer users, has up to 30 pages filled with programs, great articles, product reviews, graphics, advertisements, etc... Different issues feature games, graphics, utilities, business, beginner's guides, and always our end-of-the-year holiday issue. Just to show you that every other month brings you a variety for you Tandy Color Computer. So subscribe to TRS-80 Computing today! (trial issues can be bought for \$1.25 each)

I would like:

3 issues (1/2 year) for \$6  
 6 issues (1 year) for \$10  
 12 issues (2 years) for \$15  
 1 trial issue for \$1.25

I am paying by:

CASH     CHECK  
(Payment must accompany order)

Name \_\_\_\_\_

Address \_\_\_\_\_

City \_\_\_\_\_ State \_\_\_\_\_ Zip \_\_\_\_\_

\* TRS-80 Computing is sent First Class Mail, and in either yellow manilla or white tyvek envelopes for customers residing outside of the New England States.

\* We are not responsible for issues you do not receive after we send it, but we do check after the first issue to see if you got it alright.

\* Postage and the cover price is included in all rates.

\* A receipt will be given with the first issue you receive.

THANK-YOU!

**TRS-80 Computing**  
65 Oak Road  
Canton, MA 02021-2605



## Super Menu

Super menu is a disk-menu program that can do the following by pressing the required key:

<0><1><2>. Drive select. Press these at command level, to load new drive.

<ENTER> To run program. Basic programs will run. MML programs will be loaded. Data files will be stopped.

<C>opy command. Follow the prompts. "ENTER" at drive select escapes.

<D>irectory printout. You will be prompted for the baud-rate and title. Top-Of-Form, Auto-Page-Break features are provided as options.

<K>ill filename. Auto-runs on "Y" at prompt. Inhibits the use of disk commands when "killed". Killed file is retained until new drive is selected.

<L>ook at file. works best on BASIC created ASCII files. Follow prompts.

<R>ename file. Window is provided for entry of new filename. "ENTER" only escapes. Hit ENTER when done, or 8 letters. Auto-Executes.

<Q>uit program. Exits via a cold-start.

```

10 '*    PAUL BELL POLLOCK    *
20 '
30 '**  ARRAY AND SETUP  **
40 VERIFYON: CLEAR 3000: DIM A$(72):
DIM AA(72): RR$=STRING$(3,182)
50 '
60 '**  DIRECTORY LOADER  **
70 A=0: GOSUB 550: PRINT@32, STRING$(
(32,175)): PRINT@39, "LOADING DIRE

```

```

CTORY": FOR S=3 TO 11: DSKI$(D,17,S), B
1$(B2$): C$=B1$+LEFT$(B2$,127): FOR
T=1 TO 255 STEP 32: T$=MID$(C$,T,14):
IF LEFT$(T$,1)=CHR$(0) OR LEFT$(T
$,1)=CHR$(255) THEN 80 ELSE A=A+1:
A$(A)=T$
80 IF T$=STRING$(14,255) THEN 90 E
LSE NEXT T$, S
90 POKE $HFF40,0
100 IFA<2 THEN 130 ELSE PRINT@39, "S
ORTING DIRECTORY": FOR B=1 TO (A-1)
: FOR C=(B+1) TO A: IFA$(B)<=A$(C) THE
N NEXT C, B: GOTO 130 ELSE T$=A$(B): A$
(B)=A$(C): A$(C)=T$: NEXT C, B
110 '
120 '** SCREEN MAP SET-UP **
130 DATA 98,108,118,130,140,150,
162,172,182,194,204,214,226,236,
246,258,268,278,290,300,310,322,
332,342,354,364,374,386,396,406
140 PRINT@39, STRING$(17,175): PR
INT@41, "MAPPING SCREEN": RESTORE
: FOR B=1 TO 30: READ C: AA(B)=C: NEXT B:
RESTORE: FOR B=31 TO 60: READ C: AA(B)=
C: NEXT B: RESTORE: FOR B=61 TO 72: READ
C: AA(B)=C: NEXT B
150 '
160 '** START SCREEN FORMAT **
170 B=1: C=30
180 GOSUB 550: PRINT@37, "DIRECTORY
FOR DRIVE": D=: FOR S=B TO C: PRINT@
AA(S), LEFT$(A$(S),8): NEXT S
190 '*****
200 '** CONTROL BLOCK **
210 '*****
220 S=B: PRINT@AA(S)-1, CHR$(239):
: PRINT@AA(S)+8, CHR$(239): GOSUB 6
00
230 FOR LQ=341 TO 344: POKE LQ, 255: NE
XT LQ
240 K$=INKEY$: IF K$="" THEN 230

```

```

250 IF K$=CHR$(94) THENIFS-3<B T
HENGOTO450 ELSEPRINT@AA(S)-1,CHR
$(175)::PRINT@AA(S)+8,CHR$(175)::
:S=S-3:PRINT@AA(S)-1,CHR$(239)::
PRINT@AA(S)+8,CHR$(239)::GOSUB60
0:GOTO230
260 IFK$=CHR$(95) THEN450
270 IFK$=CHR$(10) THENIFS+3>C AN
D S+3<=A THENGOTO500 ELSEIFS+3>A
THEN230 ELSEPRINT@AA(S)-1,CHR$(
175)::PRINT@AA(S)+8,CHR$(175)::S
=S+3:PRINT@AA(S)-1,CHR$(239)::PR
INT@AA(S)+8,CHR$(239)::GOSUB600:
GOTO230
280 IFK$=CHR$(91) THENIFA<=C THE
N230 ELSE500
290 IFK$=CHR$(8) THENIFS-1<B THE
N450 ELSEPRINT@AA(S)-1,CHR$(175)
::PRINT@AA(S)+8,CHR$(175)::S=S-1
:PRINT@AA(S)-1,CHR$(239)::PRINT@
AA(S)+8,CHR$(239)::GOSUB600:GOTO
230
300 IFK$=CHR$(9) THENIFS+1>C AND
S+1<=A THEN500 ELSEIFS+1>A THEN
230 ELSEPRINT@AA(S)-1,CHR$(175)
:PRINT@AA(S)+8,CHR$(175)::S=S+1
:PRINT@AA(S)-1,CHR$(239)::PRINT@A
A(S)+8,CHR$(239)::GOSUB600:GOTO2
30
310 IFK$="0" OR K$="1" OR K$="2"
THEND=VAL(K$):GOSUB550:FOR S=1TO7
2:A$(S)="":AA(S)=0:NEXTS:GOTO70
320 IFK$=CHR$(13) THENGOSUB670
330 IFK$="Q" THENPOKE113,0:EXEC4
0999
340 IFK$="R" THENGOSUB740
350 IFK$="L" THENGOSUB1520
360 IFK$="H" THENGOSUB1720
370 IFK$="D" THENGOSUB1140
380 IFK$="C" THENGOSUB880
390 IFK$="K" THENGOSUB1040
400 POKE&HFF40,0:GOTO230
410 '
420 '** CONTROL SUBROUTINES **
430 '
440 '** SCREEN UP**
450 IFB=1THEN230
460 IFB=31THEN170
470 IFB=61THENB=31:C=60:GOTO180
480 '
490 '** SCREEN DOWN **
500 IFB=1THENB=31:C=60:GOTO180
510 IFB=31THENB=61:C=72:GOTO180
520 IFB=61THEN180
530 '
540 '** SCREEN LABEL **
550 CLS3:PRINT@12,"CONTROL":PRI
NT@492,"<H>ELP":PRINT@37,"DIREC
TORY FOR DRIVE":D:IFA>C THENPRI
NT@64,STRING$(11,163),"more":CHR
$(128),"pages":STRING$(11,163):
560 IFA<=C THENPRINT@64,STRING$(
11,163),"last":CHR$(128),"page":
STRING$(12,163):
570 PRINT@416,STRING$(8,172),"op
erating":CHR$(128),"status":STRI
NG$(8,172):RETURN
580 '
590 '** FILE TYPE ROUTINE **
600 T=ASC(MID$(A$(S),12,1)):T1=AS
C(MID$(A$(S),13,1))
610 IFT=0 AND T1=0 THENP$="BASIC
LANGUAGE" ELSEIFT=0 AND T1=255
THENP$="BASIC LANGUAGE ASCII" EL
SEIFT=1 THENP$="DATA FILE" ELSEI
FT=3 THENP$="TEXT FILE" ELSEIFT=
4 THENP$="FORMATTED TEXT FILE" E
LSE IFT=2 THENP$="MACHINE LANGUA
GE"
620 P$="/"+MID$(A$(S),9,3)+"=> "
+P$
630 PRINT@448,STRING$(32,175)::P

```



```

RINT@ABS(LEN(P$)-32)/2+448,P$;
640 RETURN
650 '
660 '** PROGRAM EXECUTIVE **
670 DRIVE(D):T=ASC(MID$(A$(S),12
.1))
680 IFT=1 OR T=3 OR T=4 OR LEFT$
(A$(S),8)=STRING$(8,"-") THENPRI
NT@480,STRING$(31,175);:PRINT@49
0,"CANNOT LOAD!";:FORT=1TO5:SOUN
D150,1:SOUND100,1:NEXTT:PRINT@48
0,STRING$(31,175);:RETURN
690 IFT=0 THENT$=LEFT$(A$(S),8)+
"/"+MID$(A$(S),9,3)+":":RIGHT$(S
TR$(D),1):PRINT@485,"LOADING=";T
$:LOADT$,R
700 IFT=2 THENT$=LEFT$(A$(S),8)+
"/"+MID$(A$(S),9,3)+":":RIGHT$(S
TR$(D),1):PRINT@485,"LOADING=";T
$:LOADM T$
710 CLS:PRINT@134,"TYPE 'EXEC' <
ENTER>":END
720 '
730 '** RENAME FILE EXECUTIVE **
740 IFLEFT$(A$(S),8)<>STRING$(8,
"-") THENB$="":PRINT@AA(S),STRIN
G$(8,207);:ELSERETURN
750 FORX=0TO7
760 C$=INKEY$:IFC$=""THEN760
770 IFLEN(B$)=0 AND C$=CHR$(13)
THENPRINT@AA(S),LEFT$(A$(S),8);:
RETURN ELSEIFC$=CHR$(13) THEN820
780 IFLEN(B$)>0 AND C$=CHR$(8) T
HENIFX>0 THENB$=LEFT$(B$,LEN(B$)
-1):X=X-1:PRINT@AA(S)+(X),CHR$(2
07);:GOTO760
790 IFLEN(B$)=0,AND X=0 AND C$=C
HR$(8) THENPRINT@AA(S),CHR$(207)
;:PRINT@AA(S)-1,CHR$(239);:GOTO7
60
800 B$=B$+C$:PRINT@AA(S)+X,C$:
810 NEXTX
820 B$=B$+STRING$(8-LEN(B$),32)
830 RENAME LEFT$(A$(S),8)+"/"+MI
D$(A$(S),9,3)+":":RIGHT$(STR$(D)
,1) TO B$+"/"+MID$(A$(S),9,3)+":
"+RIGHT$(STR$(D),1):POKE&HEF40,0
840 MID$(A$(S),1,8)=B$:PRINT@AA(
S),LEFT$(A$(S),8);
850 RETURN
860 '
870 '** COPY-FILE EXECUTIVE **
880 IFLEFT$(A$(S),8)<>STRING$(8,
"-") THENPRINT@AA(S)-1,CHR$(191)
;:PRINT@AA(S)+8,CHR$(191);:ELSER
ETURN
890 PRINT@481,"COPY FROM DRIVE";
D;" TO DRIVE";
900 C$=INKEY$:IFC$=""THEN900
910 IFC$=CHR$(13) THEN990
920 IFC$>"2" OR C$<"0" THEN900
930 D1=VAL(C$):PRINTD1;
940 IFD=D1 THENPRINT@480,STRING$
(31,175);:PRINT@481,"DRIVES MUST
BE DIFFERENT!";:FORZ=1TO5:SOUND
150,1:SOUND100,1:NEXTZ:PRINT@480
,STRING$(31,175);:GOTO890
950 T$=LEFT$(A$(S),8)+"/"+MID$(A
$(S),9,3)
960 FORT=3TO11:DSKI$D1,17,T,B1$,
B2$:B3$=B1$+LEFT$(B2$,127):FORT1
=1TO255STEP32:T3$=MID$(B3$,T1,8)
+"/"+MID$(B3$,T1+8,3):IFT$=T3$ T
HEN970 ELSEIFMID$(B3$,T1,8)=STRI
NG$(8,255) THEN1000 ELSENEXTT1,T
;GOTO1000
970 PRINT@480,STRING$(31,175);:P
RINT@481,"EXISTS!! OVERWRITE (Y/
N)?"
980 C$=INKEY$:IFC$=""THEN980
990 IFC$<>"Y" THENPRINT@AA(S)-1,
CHR$(239);:PRINT@AA(S)+8,CHR$(23

```

```

9)::PRINT@480,STRING$(31,175)::T
$="" :T3$="" :B1$="" :B2$="" :B3$=""
:RETURN ELSEGOTO1010
1000 COPY T$+"":RIGHT$(STR$(D),
1) TO T$+"":RIGHT$(STR$(D1),1):
PRINT@AA(S)-1,CHR$(239)::PRINT@A
A(S)+8,CHR$(239)::PRINT@480,STR
ING$(31,175)::T$="" :T3$="" :B1$=""
:B2$="" :B3$="" :RETURN
1010 KILL T$+"":RIGHT$(STR$(D1)
,1):GOTO1000
1020 '
1030 '** KILL-FILE EXECUTIVE **
1040 IFLEFT$(A$(S),8)<>STRING$(8
,"-") THENPRINT@AA(S)-1,CHR$(255
)::PRINT@AA(S)+8,CHR$(255): ELSE
RETURN
1050 PRINT@448,STRING$(32,175)::
PRINT@454,"ARE YOU SURE YOU WANT
":PRINT@480,STRING$(31,175)::PR
INT@487,"TO KILL FILE (Y/N)?"
1060 C$=INKEY$:IFC$="" THEN1060
1070 IFC$="Y" THEN1090
1080 PRINT@AA(S)-1,CHR$(239)::PR
INT@AA(S)+8,CHR$(239)::PRINT@448
,STRING$(32,175)::PRINT@480,STR
ING$(31,175)::GOSUB600:RETURN
1090 PRINT@AA(S),STRING$(8,"-"):
1100 T$=LEFT$(A$(S),8)+"/"+MID$(
A$(S),9,3)+"":RIGHT$(STR$(D),1)
1110 KILL T$:MID$(A$(S),1,8)=STR
ING$(8,"-"):GOTO1080
1120 '
1130 '** PRINTER DIRECTORY EXECU
TIVE **
1140 PRINT@480,STRING$(31,175)::
PRINT@487,"PRINTER READY Y/N?":
1150 C$=INKEY$:IFC$="" THEN1150
1160 IFC$<>"Y" THENPRINT@480,STR
ING$(31,175)::RETURN
1170 PRINT@480,STRING$(31,175)::

```

```

PRINT@486,"ENTER BAUD RATE=>":
1180 B$="" :X1=503:PRINT@X1,STRIN
G$(4,191):
1190 FORX=0TO3
1200 C$=INKEY$:IFC$="" THEN1200
1210 IFLEN(B$)=0 AND C$=CHR$(13)
THEN1200 ELSEIFC$=CHR$(13) THEN
1250
1220 IFLEN(B$)>0 AND C$=CHR$(8)
THENIFX>0 THENB$=LEFT$(B$,LEN(B$
)-1):X=X-1:PRINT@X1+X,CHR$(191):
:GOTO1200 ELSEIFLEN(B$)=0 AND C$
=CHR$(8) AND X=0 THENPRINT@X1,CH
R$(191)::GOTO1200
1230 B$=B$+C$:PRINT@X1+X,C$:
1240 NEXTX
1250 IFB$="600" THENPOKE150,87:G
OTO1270 ELSEIFB$="1200" THENPOKE
150,41:GOTO1270 ELSEIFB$="2400"
THENPOKE150,18:GOTO1270 ELSEIFB$
="4800" THENPOKE150,7:GOTO1270 E
LSEIFB$="9600" THENPOKE150,1:GOT
O1270
1260 GOTO1170
1270 PRINT@448,STRING$(32,175)::
PRINT@455,"INPUT DESCRIPTION":
1280 PRINT@480,STRING$(31,175)::
PRINT@485,CHR$(128)+STRING$(19,2
07)::B$="" :C$=""
1290 FORT=0TO19
1300 B$=INKEY$:IFB$="" THEN1300
1310 IFC$="" AND B$=CHR$(13) THE
NGOSUB590:PRINT@480,STRING$(31,1
75)::RETURN ELSEIFB$=CHR$(13) TH
EN1360
1320 IFT>0 AND C$>" " AND B$=CHR$
(8) THENPRINT@485+T,CHR$(207)::T
=T-1:PRINT@485+T,CHR$(128)::C$=L
EFT$(C$,LEN(C$)-1):GOTO1300 ELSE
IFB$=CHR$(8) THEN1290
1330 C$=C$+B$:PRINT@485+T,B$+CHR

```



```

$(128):
1340 NEXTT
1350 B$=INKEY$:IFB$=""THEN1350
1360 IFB$<>CHR$(13) THENPRINT@480,STRING$(31,175)::PRINT@487,"20
LETTERS ONLY!":FORT=1TO5:SOUND
150,1:SOUND100,1:NEXTT:GOTO1280
1370 S1=S:IFJ1+8>58THENQ1=66-J1:
FORT=1TOQ1:PRINT#-2:NEXTT:J1=0:G
OSUB1480 ELSEGOSUB1480
1380 Q=1
1390 PRINT#-2,LEFT$(A$(Q),8):"
":S=Q:GOSUB590:PRINT#-2,TAB(10)
P$:IFQ+1<=A THEN S=Q+1:GOSUB590:
PRINT#-2,TAB(40)LEFT$(A$(Q+1),8)
:" ":PRINT#-2,TAB(50)P$ ELSEPR
INT#-2
1400 J1=J1+1
1410 IFJ1>58 THENQ1=66-J1:FORT=1
TOQ1:PRINT#-2:NEXTT:J1=0:GOSUB14
80
1420 Q=Q+2:IFQ<=A THEN1390
1430 PRINT@480,STRING$(31,175)::
PRINT@486,"TOP OF FORM (Y/N)?"
1440 K$=INKEY$:IFK$=""THEN1440
1450 IFK$="N" THEN1470 ELSEIFK$=
"Y" THEN1460 ELSE1440
1460 Q1=66-J1:J1=0:FORT=1TOQ1:PR
INT#-2:NEXTT
1470 PRINT@480,STRING$(31,175)::
S=S1:GOSUB590:RETURN
1480 FORT=1TO5:PRINT#-2:NEXTT:PR
INT#-2,"Directory for Drive":D:"
Comments: "+C$:PRINT#-2,"Fi
lename":TAB(10)"/Ext=> Filetype"
:TAB(40)"Filename":TAB(50)"/Ext=
>Filetype"
1490 PRINT#-2,STRING$(80,"-"):J1
=J1+8:RETURN
1500 '
1510 '** LOOK AT FILE EXECUTIVE

```

```

**
1520 IFLEFT$(A$(S),8)<>STRING$(8
,"-") THEN T=ASC(MID$(A$(S),12,1)
):T1=ASC(MID$(A$(S),13,1)) ELSE R
ETURN
1530 IFT=0ANDT1=0ORT>1 THENPRINT
@480,STRING$(31,175)::PRINT@484,
"WON'T PRINT LAST LINE!!":FORT=
1TO5:SOUND150,1:SOUND100,1:NEXTT
:PRINT@480,STRING$(31,175):
1540 PRINT@454,"LOOK AT FILE ROU
TINE":PRINT@482,"<S>TART,STOP,R
ESUME <R>ETURN":
1550 K$=INKEY$:IFK$=""THEN1550
1560 IFK$="R" THEN1670
1570 IFK$<>"S" THEN1550
1580 T$=LEFT$(A$(S),8)+"/"+MID$(
A$(S),9,3)+": "+RIGHT$(STR$(D),1)
1590 CLS
1600 OPEN"1",#1,T$
1610 IFT=0ANDT1=0ORT>1THENINPUT#
1,B$:PRINT#-2,B$:" ":ELSE LINEI
NPUT#1,B$:PRINT#-2,B$
1620 IFEOF(1)=-1THEN1660
1630 K$=INKEY$
1640 IFK$="S" THENPOKE&HFF40,0:G
OSUB1690
1650 IFK$<>"R" THEN1610
1660 CLOSE:POKE&HFF40,0:PRINT:PR
INT@481,"PRESS ANY KEY TO RETURN
":
1670 K$=INKEY$:IFK$=""THEN1670
1680 GOSUB550:FORT=B TOC:PRINT@A
A(T),LEFT$(A$(T),8):NEXTT:PRINT
@AA(S)-1,CHR$(239)::PRINT@AA(S)+
8,CHR$(239)::GOSUB600:RETURN
1690 K$=INKEY$:IFK$=""THEN1690 E
LSE RETURN
1700 '
1710 '** HELP EXECUTIVE **
1720 FORT=96TO384STEP32:PRINT@T:

```

```

NEXTT
1730 PRINT@448,STRING$(32,175)::
PRINT@458,"HELP SCREEN":PRINT@4
89,"PRESS ANY KEY";
1740 PRINT@97,RR$:" <0><1><2>. D
RIVE SELECT.          PRESS THESE
. AT COMMAND          LEVEL. TO L
OAD NEW DRIVE.":
1750 PRINT@225,RR$:" <ENTER> TO
RUN PROGRAM.          BASIC PROG
RAMS WILL RUN,        ML PROGRAM
S WILL BE             LOADED. DA
TA AND TEXT          FILES WILL
BE STOPPED.":
1760 K$=INKEY$:IFK$=""THEN1760
1770 FORT=96TO384STEP32:PRINT@T:
NEXTT
1780 PRINT@97,RR$:" <C>OPY COMMA
ND. FOLLOW            THE PROMPTS
. 'ENTER' AT          DRIVE-SELEC
T. ESCAPES.":
1790 PRINT@225,RR$:" <D>IRECTORY
PRINTOUT.             YOU WILL B
E PROMPTED FOR        BAUD-RATE,
AND TITLE.             TOP-OF-FOR
M. AUTO-PAGE-         BREAK FEAT
URES ARE               PROVIDED A
S OPTIONS.":
1800 K$=INKEY$:IFK$=""THEN1800
1810 FORT=96TO384STEP32:PRINT@T:
NEXTT
1820 PRINT@97,RR$:" <K>ILL FILEN
AME. AUTO-RUNS        ON 'Y' AT P
ROMPT. INHIBITS       THE USE OF
DISK COMMANDS         WHEN 'KILLE
D'. KILLED            FILE IS RET
AINED UNTIL           NEW DRIVE I
S SELECTED.":
1830 PRINT@321,RR$:" <L>OOK AT F
ILE. WORKS BEST       ON BASIC C
RELATED. ASCII        FILES. FOL

```

```

LOW PROMPTS.":
1840 K$=INKEY$:IFK$=""THEN1840
1850 FORT=96TO384STEP32:PRINT@T:
NEXTT
1860 PRINT@97,RR$:" <R>ENAME FIL
E. WINDOW IS         PROVIDED FO
R ENTRY OF NEW        FILENAME. '
ENTER' ONLY.         ESCAPES. 'E
NTER' WHEN           DONE. OR 8
LETTERS. AUTO-       EXECUTES.":
1870 PRINT@321,RR$:" <ARROWS> CO
NTROL BRACKETS.     AUTO-SWITC
HES PAGES (IF        AVAILABLE)
.":
1880 K$=INKEY$:IFK$=""THEN1880
1890 FORT=96TO384STEP32:PRINT@T:
NEXTT
1900 PRINT@97,RR$:" <SHIFT>+<UP>
OR <DOWN>.           DIRECT SHIF
TS PAGES. (IF        AVAILABLE).
.":
1910 PRINT@225," <Q>UIT PROGRAM.
EXITS VIA A          COLD-START.":
1920 PRINT@480,STRING$(31,175)::
PRINT@487,"END. PRESS ANY KEY":
1930 K$=INKEY$:IFK$=""THEN1930
1940 GOTO1680
.....

```



**Keep those letters and  
comments coming. Till  
next month keep on  
hacking!!!!!!!!!!!!!!!!!!!!!!!!!!!!**



# The Hackers Den

P.O. Box 1142  
Marshall, NC 28753

Name of Submission: \_\_\_\_\_

Name: \_\_\_\_\_

Address: \_\_\_\_\_

City: \_\_\_\_\_ State \_\_\_\_\_ Zip \_\_\_\_\_

~~~~~  
Dear Contributor: Please answer the following questions so that we may publish the information with your submission. Thank-You!

1. Please tell a little about yourself in the space below:

2. May we include your address in the article? Yes No

3. What is the minimum system requirements to run your program?
4K 16K 32K 64K 128K 512K

4. Does your program require Extended Color Basis? Yes No

5. Does it require Disk Color Basis? Yes No

6. Will your program run on the: CoCo 1 CoCo 2 CoCo 3

7. Are there any commands needed before loading the program [Ex. PCL\$AR 1]? Yes No If yes please list them: _____

Please return to the address above in case of The Submissions Editor.

The Pirates Den

Get 12 exciting issue of The Pirates Den
by subscribing today.

All prices are for postage only as the
magazine is FREE.

I want :

- 1 Issue (.75)
- 2 Issues (1.50)
- 3 Issues (2.25)
- 6 Issues (4.50)
- 12 Issues (9.00)

Name _____

Address _____

City _____ State _____

Zip _____

Send to:

The Pirates Den

P.O. Box 1142

Marshall, NC 28753

Thank-You!