

New Products

M6809

This utility emulates the OS9 Level II operating system and interprets 6809 OS9 binary object modules. The package consists of version 32 of the OS9 6808 interpreter/emulator as an executable 68000 object module and the C sources with a makefile to the OS9 Level II operating system emulator. Users well versed in the C language, OS9 and OS9/68000 system calls will be able to add to and enhance the system calls supported by M6809.

OS-9/68000 \$ 65

TVP Point-Of-Sale (*Technology vs the Pencil*)

A fully integrated multi-user accounting, inventory, ordering, and check-out (cash drawer) Point-Of-Sale software package all in one package. Available January 1996.

OS-9/68000 \$3,000

VED/VPT (*Separate with purchase of WCP306 board*)

With the purchase of a WCP306 board, we are making available to you from Bob van der Poel software:

VED \$48 or VPT \$48 (reg \$59 each)

or purchase both packages for only

\$70 (a 25% savings)

X-10 Home Controller Software

This software which is currently available under KWindows on the MM/1, is being modified to work under Termcap usage for use on other OS-9/68000 systems.

\$ TBA

Wittman Computer Products

HARDWARE * SOFTWARE * CONSULTING

Full WCP306, MM/1 and OS-9/68xxx support.

Winter 1995 Catalog



Wittman Computer Products

Delivering OS-9 quality

Welcome to our second printing of the Wittman Computer Products catalog. With the introduction of our new WCP306 OS-9/68000 computer you can look forward to more new products and some of your old favorites being ported over. This winter will be a busy one for us at Wittman Computer Products. Since the acquisition of Color Systems software, we will be updating this code and making it available to run on the WCP306.

With termcap based software such as InfoXpress and VED/VPT, we are able to offer you some quality software right away for the WCP306.

Be sure to read the back page for new product information.

Sincerely,

William L. Wittman, Jr.
Owner

The entire contents of this catalog are (C) Copyright 1995 by William L. Wittman, Jr. , owner of Wittman Computer Products.

We are not responsible for typographical errors.

All orders may be made by check or money order. New York residents please add 8% NYS Sales Tax to your purchase.

All orders a shipped via UPS ground at the customers expense.

Wittman Computer Products
William L. Wittman, Jr.
7376 North Bergen Road
Bergen, New York 14416

(716) 494 - 1506 EST voice
(716) 293 - 1207 Fax

Thank you for your support.

DeskTamer

DeskTamer is the premier personal information manager for the MM/1 computer. The program incorporates a multi-windowing desktop with eye-catching 3D effects as well as intuitive point and click functionality. Because DeskTamer can be configured by the user to meet personal needs, it can be used at home or in the office.

DeskTamer is designed to expedite and enhance the organization and execution of tasks associated with your daily business or personal affairs. DeskTamer allows you to schedule appointments and reminds you of them when appropriate. It also contains a set of integrated tools (calculator, filer, notetaker, etc.) that will assist you in accomplishing many office and household chores.

DeskTamer provides a NOW! window that will always display what you have scheduled for the present time and a To-Do list to remind you of unscheduled tasks. Using the Event Manager for replicating appointments and the Warning System to remind yourself of impending engagements, even the most chaotic lives become orderly.

The possibilities for DeskTamer are limited only by your imagination! With DeskTamer, your life will definitely get more organized ... and easier!

MM/1 with K-Windows
WCP306 with MGR

\$ 65
coming soon

InfoXpress

InfoXpress is a software package designed to automate the process of connecting to communication services, then downloading, viewing, and replying to the various message bases. *InfoXpress* will automatically log onto a service, check for waiting electronic mail, enter one or more user forums and download all messages not previously read and do this for more than one service in a single session. Once all the messages have been collected, *InfoXpress* allows the user to interactively read and reply to the message while offline. Replies to individual messages are stored and then uploaded the next time *InfoXpress* connects to that service.

InfoXpress also provides a wealth of features to the user in the offline mode. *InfoXpress* maintains a list of all users in a forum that can be updated with a push of a button. *InfoXpress* will keep a mailing address file so users do not need to remember strange user names or ID numbers to send them electronic mail. Each service can have a different address file. So many features are provided that it is impossible to list them all here.

The purpose of *InfoXpress* is not only to automate the message gathering process, but also to save the user time and money. By allowing the computer to do all the work for you, your online session time is reduced with a potential reduction in your service and telephone bills (depending on how you access each service).

OS-9/68000 (OSK)

\$ 75

OS-9/6809 Levels 1 & 2

\$ 55

Updates to either, please call.

CirCad

CirCad draws wiring diagrams (schematics) on the MM/1 screen and outputs a file suitable for a PostScript printer or PostScript to dot matrix interpreter (like GhostScript or PostScript Magic).

Files are saved as a list of drawing commands in coded form, one for the program itself and one for PostScript. The reason for the PostScript file as output, rather than a screen-to-printer dump, is to take advantage of PostScript's outstanding graphics handling ability.

The PostScript file is built by translating the drawing commands in the current table into equivalent PostScript commands and locations. The resolution of the final drawing is limited only by the printing device. With a basic understanding of PostScript, the drawing can be included in other documents, such as the ones on the following page.

MM/1 with K-Windows \$ 80

New Software Products

Variations of Solitaire:

Pyramid, Klondike, Spider, Poker & Canfield
MM/1 w/ KWindows \$30 CoCo \$25

Game Pack:

Sea Battle, Minefield, KnightsBridge, Othello & Yahtzee
MM/1 w/ KWindows \$30 CoCo \$25

X-10 Master Control

MM/1 w/ KWindows \$40

KChess (GNU Chess GUI)

MM/1 w/ KWindows \$25

GNU Chess Sources Disk

OSK \$5

The above packages will be available by the summer of 1996 for the WCP306

WPShel - Word Processing Oriented Graphics Shell

CoCo \$15

Using AWK with OS-9

GNU AWK V2.1.14 for OS-9/68000
WCP306 or MM/1 \$15

Gold Runner 2000

MM/1 w/ KWindows \$35

TVP Point-Of-Sale

OSK \$3,000

LaTerm / LaDial

Terminal program with the following features:

- * All supported OS-9 68000 Serial Port settings
- * Baud rates up to 38400
- * Terminal Emulations:
 ASCII, VT52, VT100/ANSI, & KWindows
- * Support for external file transfer routines
- * Link to external Autodialer (LaDial)
- * Script Language for automated operations
- * ASCII and Binary capture features
- * Usage Log file * Conference Mode
- * Dynamic use of Alternate Setup files
- * User definable macro keys

AutoDialer program features:

- * Configurable Timeout / Pause / Number of tries
- * Database with Site, Number, Modem String, Protocol, Baud Rate, Emulation and Flow control
- * Database editing facility
- * Alarm function for connect (beeps or external sounds)

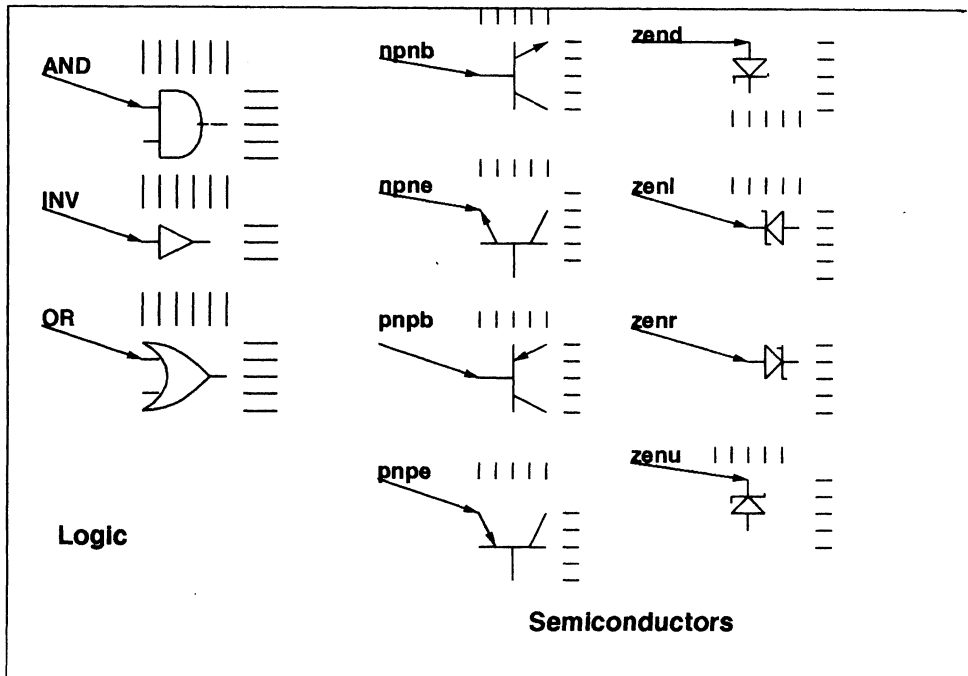
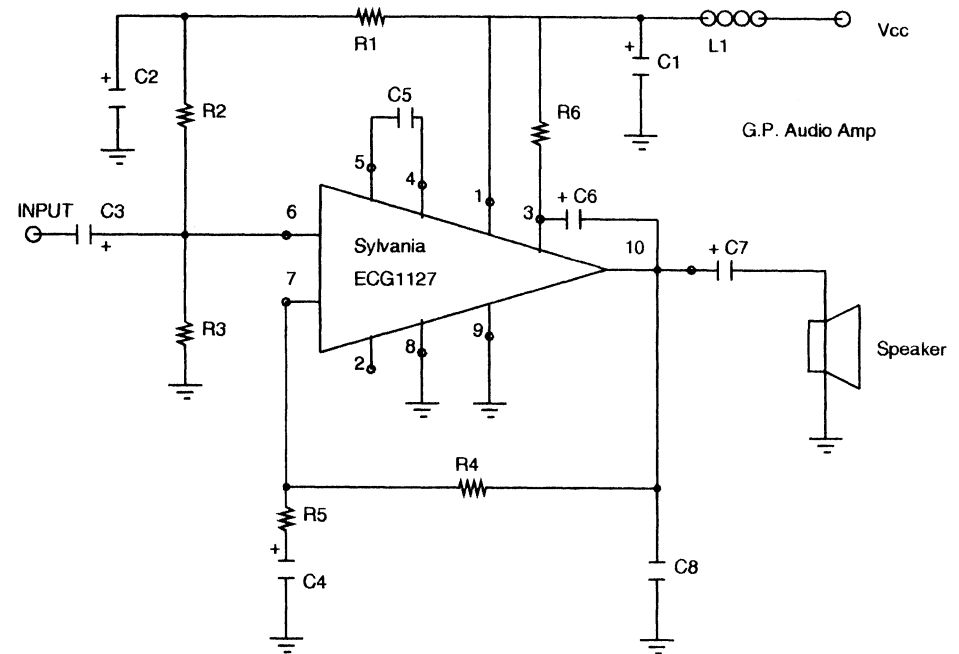
MM/1 w/ KWindows \$65

LaPhone / LaFax

LaPhone is a voice, fax, and address database manager. It contains an autodialer for making voice calls and the features of occasional fax users. As well as a bulk fax handling feature. The ability to construct one time multiple destination lists or custom lists should facilitate bulk fax transmissions.

LaFax is a stand alone fax sending utility which can be used with greater ease when interfaced with LaPhone. This is a Class 2 only program

MM/1 w/ KWindows \$65 LaFax only \$40



WCP306

OS-9 V 3.0 MGR

Single Board Computer with 16 bit PC AT I/O Bus
Specifications:

MC68306 CPU running at 16.67 MHz

- code compatible with 68000 processors
- 68681 DUART - 2 serial ports
- 16 Bit Timer/Counter
- 8 to 16 Bits Parallel I/O
- DRAM Controller

4 SIMM Sockets

- 0.5 mb, 2 mb, 4 mb, 10 mb, 16 mb, 64 mb DRAM

IDE Hard Disk Interface

- 2 drive maximum

1.44 mb Floppy Interface

- 2 drive maximum

2 16 byte FIFO serial ports

- up to 115K baud

Bi-directional parallel port

On board RS232 buffers

Battery Backed Real Time Clock

Standard AT Keyboard Interface & power connector

3 or 5 AT 16 bit I/O Slots (5 max, 3 stuffed on base)

Baby AT Size Footprint

WCP306

OS-9 V 3.0 MGR

Included software

"Personal" OSK V3.0 (Industrial with RBF)

- Microware Managers: SCF, RBF, PipeMan, Ramdisk
- Microware Utilities: date, deiniz, devs, dump, echo, etc.
- Public Domain (at least): dir/lis, cp, mv, arc, ar, tar, cpio
- Display drivers: Tseng 4K, Trident 8900D
- SCSI card support: Future Domain 1680
Adaptec AAH 15XX
- Support for CD-ROM, Soundblaster, Tape Backup

MGR - Graphical Windowing Environment

Full documentation and support

Added software:

UUCP package (mail & news) from Bob Billson
GhostScript (PostScript) Interpreter

WCP306 3 Slot Board with above software \$400
WCP306 5 slot Board with above software \$425

WCP306 Enhancements

VGA 1 meg 16 bit (1024 x 768) video card	\$ 75
101 No-click AT Enhanced keyboard	\$ 30
Desktop Case with power supply	\$110
Mid size Tower Case with power supply	\$110
TEAC 1.44 meg floppy disk drive	\$ 60
TEAC 1.2 meg floppy disk drive	\$ 65
SIMM memory 512kx9, 1mx9, 4mx9, 16x9	\$call
IDE Hard drives 200 meg or larger	\$call
3 Button Serial Mouse	\$ 20
Microware v3.2 K&R C Compiler 68000/68020	\$ 80