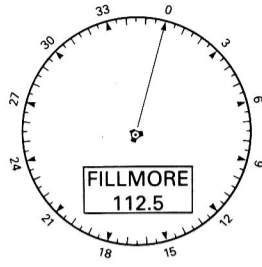


# LOS ANGELES AREA CHART

FLIGHT SIMULATOR II REFERENCE CHART. NOT TO BE USED FOR REAL WORLD AERIAL NAVIGATION

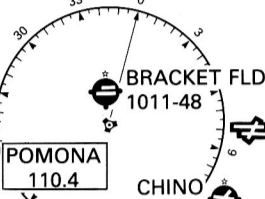


**VAN NUYS**  
113.1

**VAN NUYS**  
ATIS 118.45  
799-80

**NDB EL MONTE**  
359

**EL MONTE**  
296-40



**POMONA**  
110.4

**BRACKET FLD**  
1011-48

**CHINO**  
650.62

**ONTARIO INTL**  
953-102

**VOR RIVERSIDE**  
112.4

**RIVERSIDE MUNI**  
816-54

**VOR SANTA MONICA**  
110.8

**SANTA MONICA MUNI**  
ATIS 119.15  
175-50

**HUGHES (PVT) NFCT**  
132.4  
22-88

**HAWTHORNE MUNI**  
63-49

**NDB COMPTON**  
378

**LOS ANGELES INTL**  
ATIS 133.8  
126-121

**LOS ANGELES**  
113.6

**COMPTON**  
97-37

**SWAN LAKE**  
257

**CORONA MUNI**  
533-32

**PARADISE**  
112.2

**TORRANCE MUNI**  
101-50

**SEAL BEACH**  
115.7

**MEADOWLARK**  
28-23

**VOR(T) SANTA ANA**  
109.4

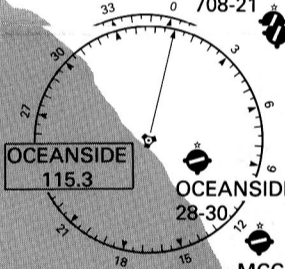
**JOHN WAYNE AIRPORT/  
ORANGE COUNTY**  
ATIS 126.0  
54-57



**SANTA CATALINA**  
111.4

**CATALINA (PVT.) CT**  
122.7  
1602-32

**FALLBROOK COMMUNITY AIRPARK**  
708-21



**OCEANSIDE**  
115.3

**OCEANSIDE MUNI**  
28-30

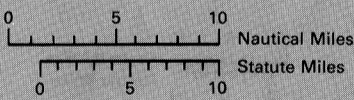
**NDB ESCONDIDO**  
374

**MCCLELLAN-PALOMAR**  
328-47



**MISSION BAY**  
117.8

**SAN DIEGO INTL-  
LINDBERGH FLD**  
ATIS 134.8  
15-94



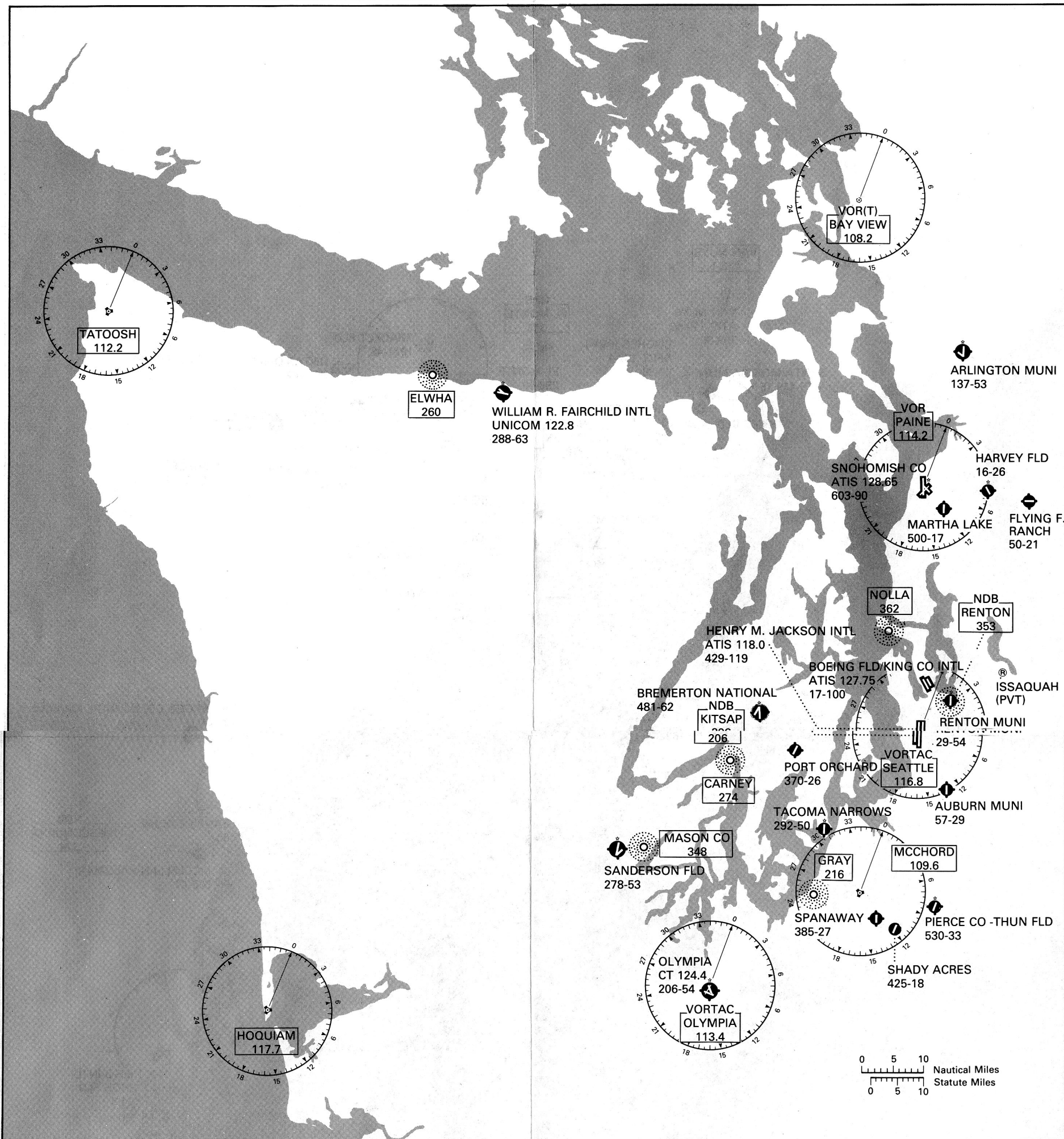
## AIRPORT DIRECTORY—LOS ANGELES AREA

CITY	AIRPORT	NORTH	EAST	ALT.	F (Fuel)	ILS (Rwy/Freq.)
Carlsbad	McClennan-Palomar	14931	6112	328		
	Catalina (PVT)	15149	5744	1602		
Chino	Chino	15319	6079	650		
Compton	Compton	15,334	5859	97		
Corona	Corona Muni	15280	6083	533		
El Monte	El Monte	15397	5952	296		
Fallbrook	Fallbrook Community Airpark	15023	6144	708		
Hawthorne	Hawthorne Muni	15358	5831	63		
Huntington Beach	Meadowlark	15244	5911	28		
LaVerne	Brackett Fld	15378	6038	1011		
Los Angeles	Hughes (PVT)	15386	5808	22	*	
Los Angeles	Los Angeles Intl	15374	5805	126	*	
Oceanside	Oceanside Muni	14974	6095	28		
Ontario	Ontario Intl	15347	6099	952		
Riverside	Riverside Muni	15288	6141	816		
San Diego	San Diego Intl-Lingbergh Fld	14761	6102	15	*	
Santa Ana	John Wayne Airport/ Orange County	15211	5961	54		
Santa Monica	Santa Monica Muni	15402	5799	175	*	
Torrance	Torrance Muni	15308	5815	101		
Van Nuys	Van Nuys	15498	5811	799	*	16R/111.3

North and east coordinates are canted at -19° (counterclockwise) to compensate for orthogonal coordinate grid overlaid on Lambert conformal conic projection.

# SEATTLE AREA CHART

FLIGHT SIMULATOR II REFERENCE CHART. NOT TO BE USED FOR REAL WORLD AERIAL NAVIGATION



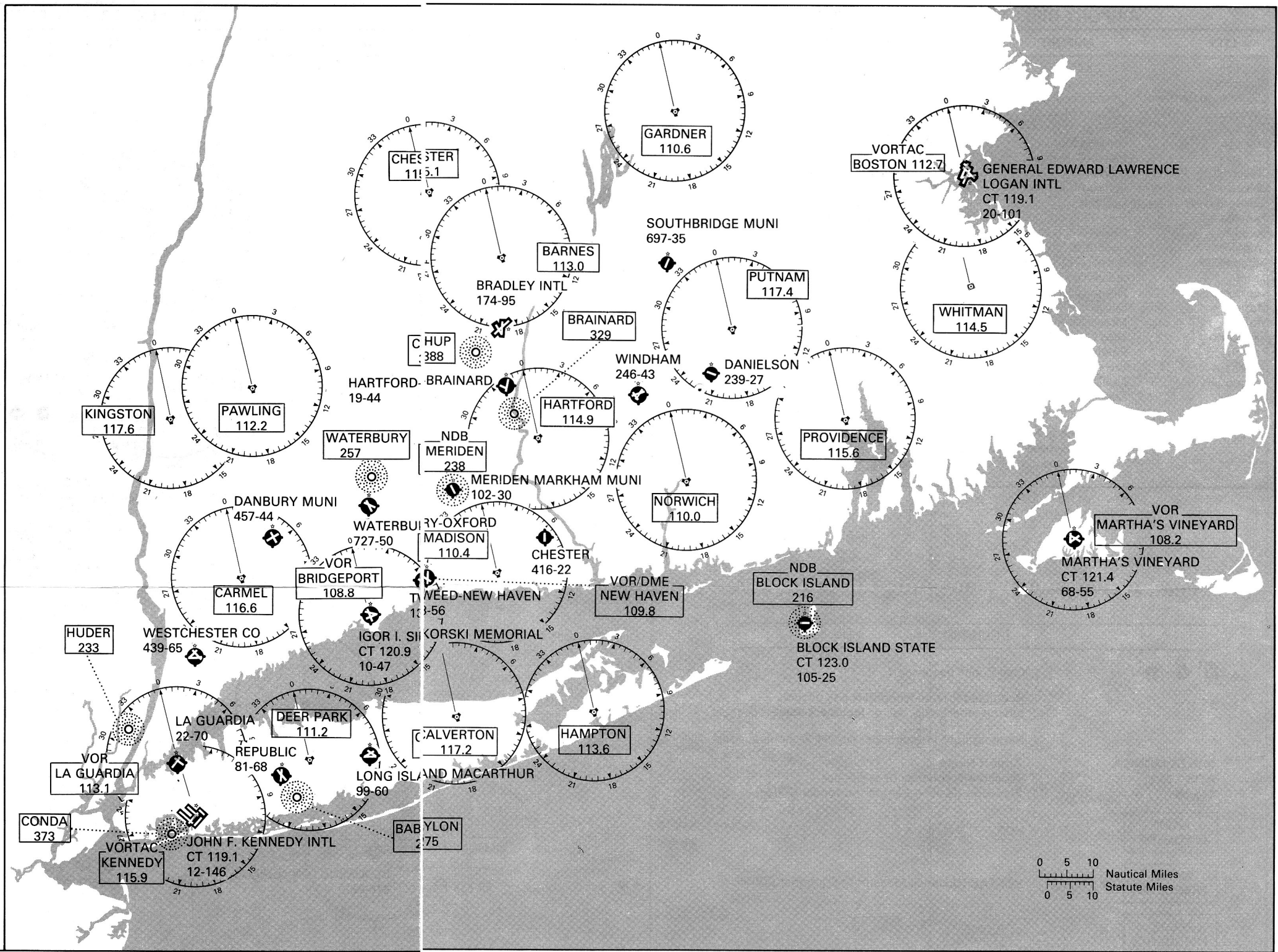
## AIRPORT DIRECTORY—SEATTLE AREA

CITY	AIRPORT	NORTH	EAST	ALT.	F (Fuel)	ILS (Rwy/Freq.)
Alderwood Manor	Martha Lake	21502	6670	500		
Arlington	Arlington Muni	21616	6737	137		
Auburn	Auburn Muni	21290	6586	57		
Bremerton	Bremerton National	21407	6470	481		
Everett	Snohomish Co	21525	6665	603	*	16/109.3
Issaquah	Issaquah	21362	6668	500	*	
Monroe	Flying F. Ranch	21481	6738	50		
Olympia	Olympia	21218	6343	206	*	
Puyallup	Pierce Co.-Thun Fld	21206	6534	530		
Port Angeles	William R. Fairchild Intl.	21740	6375	288	*	
Port Orchard	Port Orchard	21373	6483	370		
Renton	Renton Muni	21351	6612	29		
Seattle	Boeing Fld/King Co Intl	21376	6596	17	*	
Seattle	Henry M. Jackson Intl. (Seattle-Tacoma Intl)	21343	6584	429		
Shelton	Sanderson Fld.	21353	6316	278		
Snohomish Co. (Paine Field)	see Everett					
Snohomish	Harvey Fld	21505	6711	16		
Spanaway	Shady Acres	21201	6501	425		
Spanaway	Spanaway	21215	6491	385		
Tacoma	Tacoma Narrows	21300	6480	292		

North and east coordinates are canted at -21° (counterclockwise) to compensate for orthogonal coordinate grid overlaid on Lambert conformal conic projection.

# NEW YORK AND BOSTON AREA CHART

FLIGHT SIMULATOR II REFERENCE CHART  
NOT TO BE USED FOR REAL WORLD AERIAL NAVIGATION



## AIRPORT DIRECTORY—NEW YORK AND BOSTON AREA

CITY	AIRPORT	NORTH	EAST	ALT.	F (Fuel)	ILS (Rwy/Freq.)	CITY	AIRPORT	NORTH	EAST	ALT.	F (Fuel)	ILS (Rwy/Freq.)
Block Island	Block Island State	17352	21749	105	*		Marthas Vineyard	Marthas Vineyard	17490	22043	68	*	24/108.7
Boston	General Edward Lawrence Logan Intl.	17899	21853	20	*		Meriden	Meriden Markham Muni	17447	21327	102		
Bridgeport	Igor I. Sikorski Memorial	17287	21249	10	*		New Haven	Tweed-New Haven	17339	21322	13		
Chester	Chester	17404	21434	416			New York	John F. Kennedy Intl	17034	21065	12	*	
Danbury	Danbury Muni	17360	21120	457			New York	La Guardia	17091	21026	22		
Danielson	Danielson	17617	21607	239			Oxford	Waterbury-Oxford	17422	21229	727		
Farmingdale	Republic	17089	21177	81			Southbridge	Southbridge Muni	17733	21543	697		
Hartford	Hartford-Brainard	17551	21371	19			White Plains	Westchester Co	17226	21065	439		
Islip	Long Island MacArthur	17132	21278	99			Willimantic	Windham	17573	21521	246		
							Windsor Locks	Bradley Intl	17638	21351	174		

North and east coordinates are canted at +10° (clockwise) to compensate for orthogonal coordinate grid overlaid on Lambert conformal conic projection.

# AIRPORT DIRECTORY—CHICAGO AREA

CITY	AIRPORT	NORTH	EAST	ALT.	F (Fuel)	ILS (Rwy/Freq.)
Aurora	Aurora Muni	17152	16393	706		
Bloomington	Bloomington-Normal	16593	16246	875		
Champaign (Urbana)	University of Illinois Willard	16400	16465	754	*	31/109.1
Chicago	Chicago Midway	17156	16628	619	*	
Chicago	Chicago-O'Hare Intl	17243	16578	667	*	
Chicago	Lansing Muni	17049	16697	614		
Chicago	Merrill C. Meigs	17189	16671	592	*	
Chicago/Blue Island	Howel	17100	16627	600		
Chicago/Schaumburg	Schaumburg Air Park	17247	16515	795		
Chicago(West Chicago)	DuPage	17213	16466	757		
Danville	Vermilion Co	16471	16685	695		
Dwight	Dwight	16874	16404	630		
Frankfort	Frankfort	17025	16596	775		
Gibson City	Gibson City Muni	16594	16461	759		
Joliet	Joliet Park District	17038	16490	582		
Kankakee	Greater Kankakee	16846	16597	625	*	
Monee	Sanger	16980	16646	786		
Morris	Morris Muni	17004	16413	588		
New Lenox	New Lenox-Howell	17025	16571	745		
Paxton	Paxton	16578	16507	780		
Plainfield	Clow Intl	17116	16502	670		
Romeoville	Lewis University	17081	16518	672		
Urbana	Frasca Field	16448	16482	735		

North and east coordinates align with orthogonal coordinate grid overlaid on Lambert conformal conic projection.

## LEGEND

- Civil-Public use airport
- Restricted/Private-Nonpublic use airport, having emergency use or landmark value
- Rotating light in operation, sunset to sunrise

SANTA MONICA  
 ATIS 119.15  
 175-50

Airport Name  
 Advisory Frequency (if available)  
 Elevation (feet) — Length (hundreds of feet)

- NAME FREQUENCY VOR
- NAME FREQUENCY VORTAC (Distance Measuring Equipment Able)
- NAME FREQUENCY VOR/DME
- NAME FREQUENCY Non Directional Beacon
- If VOR falls directly on an airport, only the airport symbol will be shown. The VOR facility type is shown at the top of the box.

### AIRPORT NAME ABBREVIATIONS

CO	County
FLD	Field
INTL	International
MUNI	Municipal
(PVT)	Private Airport (prior permission before landing)

# CHICAGO AREA CHART

FLIGHT SIMULATOR II REFERENCE CHART. NOT TO BE USED FOR REAL WORLD AERIAL NAVIGATION

